

Model

# 600 Series

ARTICULATING  
BOOM LIFTS

JLG®

## Features

6 ft (1.83 m) Articulating Jib (600AJ only)  
Low Mount Platform:  
36 x 96 in. (0.91 x 2.44 m)  
Oscillating Axle  
Side Entry Self-Closing Swing Gate  
180 Degree Hydraulic Platform Rotator  
110V-AC Receptacle in the Platform  
5 Degree Tilt Alarm/Indicator Light  
Swing-Out Engine Tray  
12V-DC Auxiliary Power  
Hourmeter  
Horn  
Control ADE® System  
Proportional Controls  
Gull-Wing Engine Hood  
Operator Tool Tray  
Platform Console Machine  
Status Light Panel\*  
Lifting/Tie Down Lugs  
14 x 17.5 Rim Protector Lug Tread Tires  
All Motion Alarm  
Glow Plugs (Deutz and CAT)

\* Provides indicator lights at platform control console for system distress, 5 degree tilt light, and foot switch status.

## Accessories & Options

Platform: 36 x 72 in. (0.91 x 1.83 m)  
Fall Arrest Platform, Rear Entry<sup>1</sup>:  
30 x 72 in. (0.76 x 1.83 m)  
Mesh to Top Rail – Bolt-on Aluminum 6 ft  
Mesh to Top Rail – Bolt-on Aluminum 8 ft  
Soft Touch System: 6 ft/8 ft  
Foam-Filled Tires  
43.5 lb (19.7 kg) Propane Tank  
Exhaust Purifier Muffler (Deutz)  
Cold Weather Start Kit (GM)<sup>2</sup>  
Cold Weather Start Kit (Deutz & CAT)<sup>2</sup>  
Hostile Environment Kit<sup>3</sup>  
Light Package<sup>4</sup>  
Platform Worklights  
Flashing Amber Beacon  
Arctic Package<sup>5</sup>

### Accessory Packages:

SkyPower®  
SkyWelder®  
SkyGlazier®  
SkyCutter®

1. Foam-filled tires required.
2. Includes engine block heater (GM and CAT) or glow plugs (Deutz), battery heater, oil tank heater.
3. Includes console cover, boom wipers and cylinder bellows.
4. Includes head and tail lights, and platform worklights.
5. Includes arctic hydraulic hoses (drive and steer only) and main boom cable, arctic hydraulic oil, extreme cold engine oil, anti-freeze (CAT only), fuel conditioner, engine block heater, battery blanket, glow plugs, hydraulic tank heater, and oversized footswitch.



## Extra Reach and High Capacity

- The industry's best reach envelope – 26 ft 7 in. (8.1 m) up and over height and up to 39 ft 9 in. (12.12 m) horizontal outreach
- Up to 1,000 lb (454 kg) platform capacity

## More Versatility

- 7 ft (2.13 m) wide narrow chassis models go where wider competitive machines can't
- Articulating jib models to access hard to reach areas
- Standard oscillating axle and optional 4-wheel drive deliver outstanding drive performance
- Optional 4-wheel steer provides unmatched maneuverability in confined areas
- Exclusive Workstation in the Sky® options and accessories

## Easier Maintenance, Reduced Costs

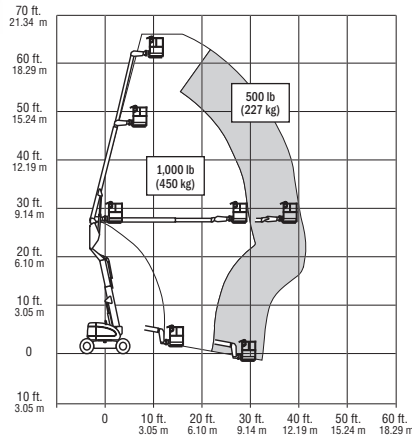
- Swing-out engine tray allows for faster and easier access for routine maintenance
- Exclusive Advanced Design Electronics (Control ADE®) System provides smoother machine functions, increased fuel efficiency

# Model 600 Series

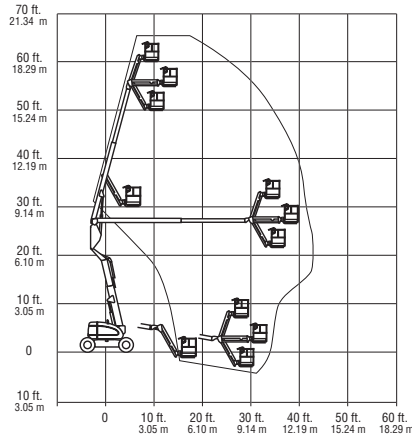
## ARTICULATING BOOM LIFTS

### Specifications

#### 600A



#### 600AJ



#### Reach

Platform Height	
600A	60 ft 8 in. (18.49 m)
600AJ	60 ft 10 in. (18.54 m)
Horizontal Outreach	
600A	39 ft 7 in. (12.07 m)
600AJ	40 ft 5 in. (12.3 m)
Up and Over Clearance	26 ft 7 in. (8.1 m)
Swing	360 Degrees Continuous
Platform Capacity – Restricted	
600A	1,000 lb (450 kg)
600AJ	500 lb (227 kg)
Platform Capacity – Unrestricted	
600A	500 lb (227 kg)
Platform Rotator	180 Degrees Hydraulic
Jib (Range of Articulation)	
600AJ	130 Degrees (+70, -60)

#### Dimensions

A. Platform Size	36 x 96 in. (0.91 x 2.44 m)
B. Overall Width	8 ft. (2.44 m)
Narrow Models	7 ft (2.13 m)
C. Tailswing (working condition)	Zero
Narrow Models	5 in. (13 cm)
D. Stowed Height	8 ft 4 in. (2.54 m)
E. Stowed Length	
600A	26 ft 9 in. (8.15 m)
600AJ	29 ft 4 in. (8.94 m)
F. Wheelbase	8 ft (2.44 m)
G. Ground Clearance	12 in. (30 cm)

#### Gross Vehicle Weight

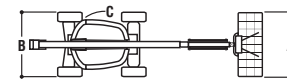
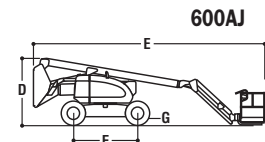
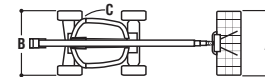
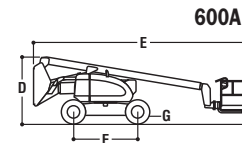
600A	21,500 lb (9,752 kg)
600A Narrow	23,900 lb (10,841 kg)
600AJ	22,200 lb (10,069 kg)
600AJ Narrow	24,000 lb (10,886 kg)
Max. Ground Bearing Pressure	
600A	77 psi (5.5 kg/cm <sup>2</sup> )
600A Narrow	94 psi (6.6 kg/cm <sup>2</sup> )
600AJ	75 psi (5.27 kg/cm <sup>2</sup> )
600AJ Narrow	94 psi (6.6 kg/cm <sup>2</sup> )

#### Chassis

Drive Speed 2WD	4.25 mph (6.8 kph)
Drive Speed 4WD	4.25 mph (6.8 kph)
Gradeability 2WD	30%
Gradeability 4WD	45%
Tires	14 x 17.5 Lug Tread
Narrow Models	14 x 17.5 Air Boss
Axle Oscillation	8 in. (20.4 cm)
Turning Radius (Inside/Outside)	
2WS	11 ft. 5 in. (3.48 m)/17 ft. 8 in. (5.38 m)
4WS	5 ft. 6 in. (1.68 m)/11 ft. 8 in. (3.56 m)
Narrow Models	
2WS	12 ft. 2 in. (3.71 m)/16 ft. 6 in. (5.03 m)
4WS	5 ft. 7 in. (1.7 m)/11 ft. 2 in. (3.4 m)

#### Power Source

Dual Fuel Engine	
GM Vortec 3000 MPFI	82 hp (61 kw)
Diesel Engine	
Deutz F4M1011F	65 hp (48 kw)
Caterpillar 3044C	63.3 hp (47.2 kw)
Fuel Tank Capacity	30 gal. (113.6 L)
Hydraulic Reservoir	30.6 gal. (115.8 L)
Auxiliary Power	12V DC



#### The JLG "1 & 5" Warranty for Models 600A & 600AJ

JLG Industries, Inc. backs our products with our exclusive "1 & 5" Warranty. We provide coverage on all products for one (1) full year, and cover all specified major structural components for five (5) full years. Due to continuous product improvements, we reserve the right to make specification and/or equipment changes without prior notification. This machine meets or exceeds applicable OSHA Regulations in 29 CFR 1910.67, 29 CFR 1926.453, ANSI A92.5-1992 and CSA B354.4-02 as originally manufactured for intended applications.



#### JLG Industries, Inc.

1 JLG Drive  
 McConnellsburg, PA 17233-9533  
 Telephone 717-485-5161  
 Toll-free in US 877-JLG-LIFT  
 Fax 717-485-6417  
[www.jlg.com](http://www.jlg.com)