

# Altec AC38-127S Hydraulic Telescopic Crane





*Altec LMAP System*

## RECOMMENDED FEATURES

- Wheel Chocks
- Fall Protection System (with Platform)
- Radio Remote Control (with Platform)

## OPTIONS

- 1-Piece 31 ft (9.4 m) Jib
- 2-Man Steel Platform
- Climate-Controlled Enclosed Cab
- Load Blocks for Multiple Parts of Line
- Hydraulic Tool Circuit at Tail Shelf
- Pintle Hitch
- Hot Shift Power Take-Off
- Utility Tool Boxes
- Rotation Resistant Wire Rope
- Glide Swing
- Auxiliary Winch, 5000 lb (2250 kg) Capacity
- Winch Control at Load Hook Stow Point

## STANDARD SAFETY FEATURES

- Altec LMAP (Load Moment & Area Protection) System
  - Rated Capacity Limiter
  - Displays: Boom Length, Boom Angle, Load on Hook, Percent of Rated Capacity
  - Electronic Working Area Definition
  - Operator Defined Audible Alarm Set-Points for Boom Angle, Length and Rotational Position
- Outrigger Boom Interlock System
- Outrigger Motion Alarm
- Back-Up Alarm
- Emergency Stop at Operator Controls
- Winch Drum Rotation Indicator
- Anti-Two Block Device
- Front Bumper Outrigger
- Altec Opti-View® Riding Seat Control Station

## CRANE SPECIFICATIONS

- 76,000 lb (34,475 kg) Maximum Lifting Capacity
- 127 ft (38.7 m) 5-Section Non-Insulated Boom
- 137 ft (41.8 m) Maximum Sheave Height
- Stowed Travel Height of 12.9 ft (3.9 m)
- Vehicle Travel Length of 38 ft (11.6 m)
- Sequential Out-and-Down Outriggers
  - Full Span 24 ft (7.3 m)
  - Mid Span 15.75 ft (4.8 m)
  - Short Span 8.17 ft (2.5 m)
- Hydraulic Pilot-Operated Control System
- Continuous Rotation
- Hydraulic Oil Cooling System
- Life Cycle Tested for Reliability

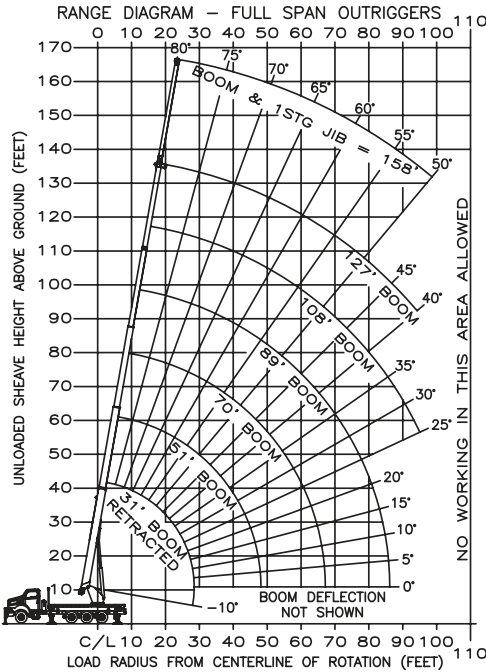
## CHASSIS REQUIREMENTS

	Option 1 Rear Tandem with Pusher		Option 2 Rear Tri-Drive	
Gross Vehicle Weight Rating	70,000 lb	31,750 kg	70,000 lb	31,750 kg
Front Axle Weight Rating	20,000 lb	9070 kg	20,000 lb	9070 kg
Rear Axle Combination Rating	40,000	+ 17,500 lb	60,000 lb	27,220 kg
	18,140	+ 7940 kg		
Cab-to-Axle	192 in	4877 mm	200 in	5080 mm
Wheel Base	262 in	6655 mm	264 in	6706 mm

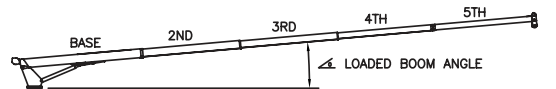
# Altec AC38-127S Capacities



## MODEL AC38-127S EXAMPLE CAPACITIES



### BOOM LOAD CAPACITIES IN LBS. WITH FULL SPAN OUTRIGGERS (24 FT)

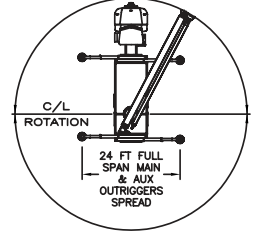


LOAD RADIUS (FT)	31 FT BOOM		51 FT BOOM		70 FT BOOM		89 FT BOOM		108 FT BOOM		127 FT BOOM		
	∠	LBS	∠	LBS	∠	LBS	∠	LBS	∠	LBS	∠	LBS	
6	73	78000											
8	69	60700											
10	65	52300	76	35000									
12	60	46100	74	33000									
15	56	38000	70	31000	76	30000							
20	45	28000	64	24500	72	23000	77	17000					
25	28	21000	57	19500	68	19000	73	16500					
30			50	16000	63	14500	70	14000	75	12000	77	8400	
35			42	13200	58	12700	66	11000	72	10000	75	7900	
40			33	10600	53	10200	62	9100	69	8500	73	7400	
45			20	8500	47	8850	59	7500	66	7100	71	6800	
50					41	7500	55	6700	63	6100	69	6000	
55					34	6200	51	6200	60	5100	66	5100	
60					26	5100	47	5300	56	4650	63	4500	
65					14	4100	43	4400	53	4300	60	3850	
70							37	3500	49	3600	58	3300	
75							30	2850	46	3000	55	2850	
80							23	2250	41	2400	52	2450	
85							9	1750	37	1900	49	2000	
90									32	1450	46	1600	
95									26	1050	42	1150	
100									22	750	37	750	
0	15500	0	6000	0	2700	0	1350	NO CAPACITY				0	0
	500		350		250		200	150				150	

NOTE: RATINGS ABOVE THE HEAVY LINE ARE BASED ON STRUCTURAL COMPETENCE AND NOT ON MACHINE STABILITY.

### AREA OF OPERATION

360° CAPACITY WORKING AREA WITH FULL SPAN AND FRONT BUMPER OUTRIGGERS



DEDUCTIONS FROM RATED LOADS FOR HANDLING DEVICES

- OVERHAUL BALL: 230 LBS
- 1-SHEAVE LOADBLOCK: 360 LBS
- 2-SHEAVE LOADBLOCK: 500 LBS
- 3-SHEAVE LOADBLOCK: 600 LBS

### JIB LOAD CAPACITIES (LBS) FOR ALL BOOM LENGTHS JIB CAPACITIES FOR FULL SPAN OUTRIGGERS (24 FT)

LOADED BOOM ANGLE	50° *	55°	60°	65°	70°	75°	80°
1 STAGE 31 FT JIB	700	1250	1900	2600	3100	3400	3900

\* DO NOT OPERATE JIB BELOW THIS ANGLE UNLESS BOOM IS FULLY RETRACTED.

<p>OPERATOR AIDS MUST BE IN GOOD OPERATING CONDITION BEFORE OPERATING CRANE. REFER TO OWNERS MANUAL.</p> <p>KEEP AT LEAST 3 WRAPS OF LOADLINE ON DRUM AT ALL TIMES.</p> <p>USE ONLY 5/8" DIAMETER IWRC OR ROTATION RESISTANT WIRE ROPE WITH 45,400 LBS. MIN. BREAKING STRENGTH ON THIS MACHINE.</p>	1 PART LOAD LINE	2 PART LOAD LINE	3 PART LOAD LINE	4 PART LOAD LINE	5 PART LOAD LINE	6 PART LOAD LINE	
	LOADS UP TO	LOADS UP TO	LOADS UP TO	LOADS UP TO	LOADS UP TO	LOADS UP TO	
	IWRC XXIP WIRE ROPE	12,971 LBS.	25,942 LBS.	38,913 LBS.	51,884 LBS.	64,855 LBS.	76,000 LBS.
ROTATION RESISTANT WIRE ROPE	9,080 LBS.	18,160 LBS.	27,240 LBS.	36,320 LBS.	45,400 LBS.	54,480 LBS.	
MAXIMUM BOOM LENGTH AT MAXIMUM ELEVATION WITH RIGGING SHOWN TO REACH THE GROUND	127 FT BOOM	119 FT BOOM	87 FT BOOM	68 FT BOOM	55 FT BOOM	46 FT BOOM	
LIFTS AND SPEEDS							
5/8" DIAMETER IWRC XXIP CABLE SUPPLIED	STANDARD PLANETARY WINCH HIGH SPEED	6170 LBS. 298 FT/MIN	12,340 LBS. 149 FT/MIN	18,510 LBS. 99 FT/MIN	24,680 LBS. 74 FT/MIN	30,850 LBS. 59 FT/MIN	37,020 LBS. 49 FT/MIN
	STANDARD PLANETARY WINCH LOW SPEED	12340 LBS. 149 FT/MIN	24,680 LBS. 74 FT/MIN	37,020 LBS. 49 FT/MIN	49,360 LBS. 37 FT/MIN	61,700 LBS. 29 FT/MIN	74,040 LBS. 24 FT/MIN
<p>ALL WINCH PULLS AND SPEEDS IN THIS CHART ARE SHOWN ON THE 3RD LAYER. WINCH LINE PULLS WOULD INCREASE ON THE FIRST AND SECOND LAYERS. WINCH LINE SPEED WOULD DECREASE ON THE FIRST AND SECOND LAYERS. WINCH LINE PULLS MAY BE LIMITED BY THE WINCH CAPACITY OF 10,439 LBS FULL DRUM OR ANSI CABLE SAFETY LIMITS SHOWN IN CHART FOR IWRC XXIP AND ROTATION RESISTANT WIRE ROPES.</p>							
<p><b>CAUTION:</b></p> <ol style="list-style-type: none"> <li>Load ratings shown are maximum allowable loads with the crane mounted on an Altec-approved chassis.</li> <li>Loaded boom angles at specified boom lengths give only an approximation of the operating radius. The boom angle before loading should be greater to account for deflections. Do not exceed the operating radius for rated loads.</li> <li>When between listed boom lengths for radii, always use the smallest of values shown. Capacities for the 31 ft boom length must only be lifted with boom fully retracted.</li> <li>Load ratings are based on freely suspended loads with the crane properly set-up on outriggers, with the machine leveled and standing on firm uniform supporting surface.</li> <li>Actual working capacities depend on supporting surfaces, wind and other factors affecting stability such as hazardous surroundings, experience of personnel, and proper handling.</li> <li>Weights of load block, stowed jib, or other accessories must be deducted from the rated capacities shown.</li> </ol>							



**For Service: 1-877-GO-ALTEC**

**For Sales: 1-866-966-2969**

Altec Cranes are supported by service centers and over 115 mobile service technicians positioned across North America, seven days a week, 24 hours a day.

**United States:**

Alabama Service Center  
1730 Vanderbilt Road  
Birmingham, AL 35234

Arizona Service Center  
2420 South 16th Avenue  
Phoenix, AZ 85007

California Service Center (Northern)  
325 Industrial Way  
Dixon, CA 95620

California Service Center (Southern)  
2882 Pomona Boulevard  
Pomona, CA 91766

Colorado Service Center  
641 Telluride Street  
Aurora, CO 80011

Florida Service Center  
2570 Old Okeechobee Road  
West Palm Beach, FL 33409

Georgia Service Center  
287 First Street  
Forest Park, GA 30297

Indiana Service Center  
5201 West 84th Street  
Indianapolis, IN 46268

Kentucky Service Center  
200 Altec Drive  
Elizabethtown, KY 42701

Maryland Service Center  
1434 Hughes Ford Road  
Frederick, MD 21701

Massachusetts Service Center  
28 Wales Street  
Millbury, MA 01527

Missouri Service Center  
2106 S. Riverside Road  
St. Joseph, MO 64507

North Carolina Service Center  
1550 Aerial Avenue  
Creedmoor, NC 27522

Ohio Service Center  
1236 Township Road 1175  
Ashland, OH 44805

Oregon Service Center  
13817 NE Sandy Boulevard  
Portland, OR 97230

Pennsylvania Service Center  
250 Laird Street  
Plains, PA 18705

Texas Service Center  
1001 Solon Road  
Waxahachie, TX 75156

Virginia Service Center  
325 South Center Drive  
Daleville, VA 24083

**Canada:**

British Columbia Service Center  
12352 84th Avenue  
Surrey, BC V3W 0J5

Manitoba Service Center  
57 Durand Road  
Winnipeg, Manitoba R2J 3T1

Ontario Service Center  
831 Nipissing Road  
Milton, Ontario L9T 4Z4



*Vehicle Travel Height of 12.9 ft (3.9 m)*



*Optional 2-Man Platform*

**Altec Industries, Inc.**

325 South Center Drive  
Daleville, VA 24083  
1-540-992-5300



Manufacturing and Service Facilities Located  
Throughout the United States and Canada  
[www.altec.com](http://www.altec.com)