

ATJ 46

SELF-PROPELLED ARTICULATING BOOM - DIESEL



PERFORMANCE

■ POWER ■ PRECISION ■ ERGONOMICS ■ SERVICEABILITY



■ MAXIMUM PLATFORM HEIGHT

45'11" [14.01 m]

■ PLATFORM MAXIMUM CAPACITY

500 lbs. [227 kg]

■ EXCELLENT HORIZONTAL OUTREACH

27'3" [8.3 m]

■ FOUR (4) SIMULTANEOUS MOVEMENTS

Increase productivity with the ability to perform quick movements. Takes approximately 40 seconds to reach 46 ft.

■ CONSTANT ROTATION CONTROL

Platform rotation speed varies according to how far the boom is extended.

355°
TURRET ROTATION

■ SMOOTH PLATFORM OPERATION

All hydraulic movements are proportionate allowing for smooth operation and precise adjustments in tight areas.

■ STOP AND GO FEATURE

The MANITOU "Stop and Go" system allows the engine to be running only when the machine is actually working lowering fuel consumption, less wear and tear, better resale value, and lower Total Cost of Ownership (TCO).



■ OSCILLATING FRONT AXLE IS STANDARD

The heavy-duty oscillating front axle provides improved traction to the front wheels for more driving power on all-terrain or slippery surfaces.

14" [360 mm]

■ DESIGNED FOR ROUGH TERRAIN

High Ground Clearance of 14" (mm) with 4-Wheel-Drive 45% Gradeability





EASY AND INTUITIVE CONTROL PANEL DESIGN

Ergonomic platform control panel comes standard with a protective cover to keep out water and jobsite material.

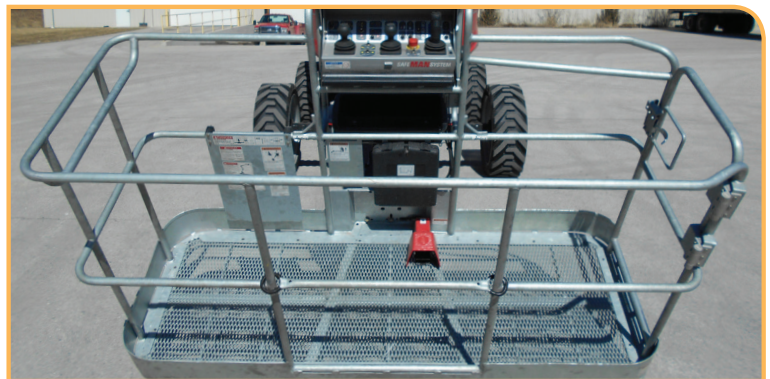
SELF-DIAGNOSTIC AT GROUND CONTROL PANEL

The self-diagnostic system is fully integrated for fast detection of fault codes, saving time during maintenance as well as machine configuration. The ground panel control on-screen display constantly shows information on; fuel, hour meter, battery voltage, and more.



SAFE MAN SYSTEM (OPTIONAL)

The Safe-Man System will automatically shut off the unit if it detects operator movement into the control panel.



COMPACT RETRACTED DIMENSIONS

14'9" x 7'7" x 9'3" (4.49 m x 2.32 m x 2.83 m)

Easy to transport when retracted. The overall length of the machine will decrease to under 15 ft with a light weight of 13,342 lbs. (6052 kg).

GALVANIZED PLATFORM

The fully galvanized 6'11 x 2'7" (2.1 x 0.80m) platform is designed to adapt for extreme conditions and better rust resistance. The platform floor is removable, and easy to replace if needed versus replacing the entire platform.

SWING GATE PLATFORM ENTRANCE

The swing gate makes for easy and quick operator entrances to and from the platform.

TOOL TRAY COMPARTMENT

A large tray is located under the platform control box to hold tools and other jobsite accessories.

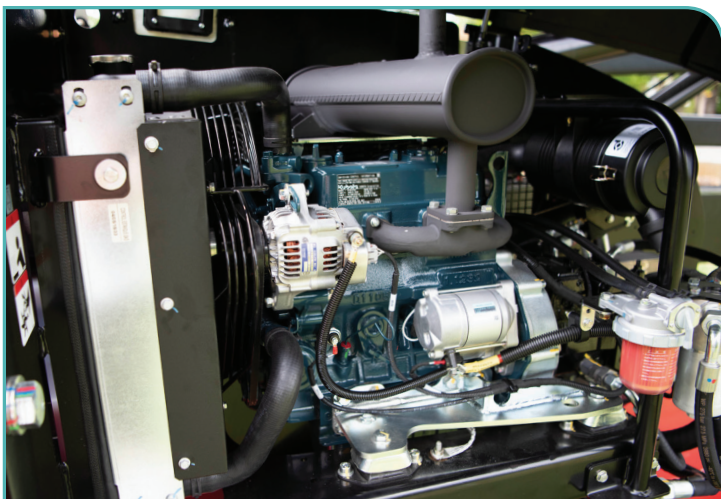
MAINTENANCE MADE EASY

All maintenance components are located in one place for easy accessibility. Hoses have been properly routed to avoid interference, reducing turnaround times.

CONNECTED MACHINE

Manage unit location, maintenance cycles, service warnings and more with the EasyMANAGER telematics feature.

NO DEF REQUIRED



ATJ 46 SPECIFICATIONS & DIAGRAMS

CAPACITIES	Platform Height (m)	45'11" (14.01 m)	
	Horizontal Outreach (m)	27'3" (8.30 m)	
	Up and Over Height (m)	24'7" (7.50 m)	
	Vertical Jib Rotation	+ 65° / -59.5°	
	Platform Capacity (kg)	500 lbs. (227 kg)	
	Turret Rotation	355° non-continuous	
	Platform Rotation (right/left)	90° / 90°	
	Number of People (inside/outside)	2	
	WEIGHT / DIMENSIONS / PERFORMANCE	Machine Weight (kg)	13,342 lbs.* (6052 kg*)
		Platform Dimensions L x W (m)	6'11" x 2'7" (2.1 x 0.8 m)
A - Overall Width (m)		7'7" (2.32 m)	
B - Overall Length (m)		21'5" (6.68 m)	
C - Overall Length - retracted (m)		14'9" (4.49 m)	
D - Overall Height - retracted (m)		9'3" (2.83 m)	
E - Overall Height (m)		7'9" (2.37 m)	
F - Floor Height (access) (m)		1'6" (0.45 m)	
G - Turning Radius - inside (m)		7'6" (2.29 m)	
H - Turning Radius - outside (m)		17' (5.17 m)	
I - Ground Clearance (m)		1'2" (0.36 m)	
J - Wheelbase		7'2" (2.20 m)	
Tailswing (m)		9" (0.22 m)	
Travel Speed (km/h)		3.11 mph (5 km/h)	
Working Speed (km/h)		0.62 mph (1 km/h)	
Gradeability		45%	
TIRES		Type of Tires	Rough-terrain foam filled
	Dimensions (Ø x W)	2'9" x 11" (0.84 x 0.29 m)	
	Drive / Steering / Brake wheels	4 / 2 / Rear	
ENGINE	Manufacturer	Kubota	
	Model	D1105-E4B	
	Power (kW)	24.1 hp (18.5)	
MISCELLANEOUS	Ground Pressure (dan/cm ²)	139 psi (9.6)	
	Maximum Hydraulic Pressure (bar)	4931 psi (340)	
	Hydraulic Tank Capacity (L)	14.27 US gal (54 L)	
	Fuel Tank Capacity (L)	14 US gal (52.9 L)	
	Sound Level on Ground	105 db	

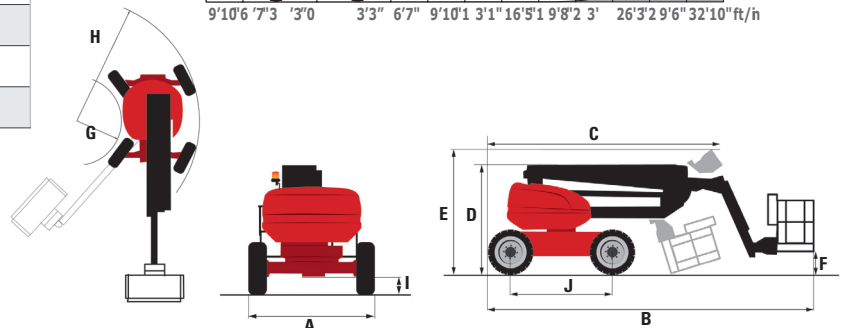
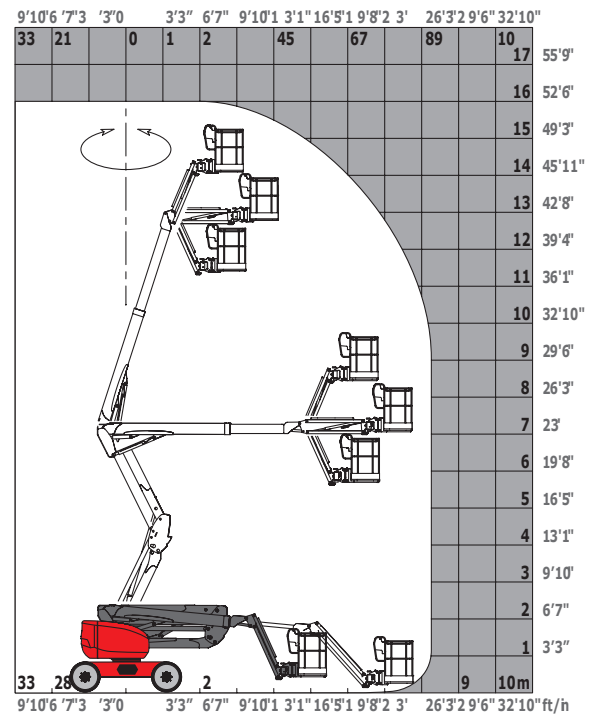
*Changes according to options and standard of the country where the machine will be delivered.

STANDARD FEATURES

- Stop and Go
- 4 Simultaneous Movements
- 4 Wheel Drive
- Audible Alarm and Illuminated Lamp (leveling, overload, lowering)
- Front Oscillating Axle
- Lift and Drive
- Steer and Rotate
- Emergency Electric Pump
- Swinging Gate on Platform
- CAN Bus Technology
- Operating Pedal
- Differential Lock on Rear Axle
- Emergency Stop Button in Platform and Frame
- Front Axle with Limited Slip
- Fuel Gauge w/ Low Level Indicator
- Horn in the Platform
- Self-Diagnostic System
- Cut-Off Battery
- Constant Rotation Control
- Proportional Controls
- Control Panel Protective Cover
- Rotating Beacon Light
- Easy Manager
- Jib
- Water Heater
- Tools Storage in Platform
- Galvanized Platform with Mesh Floor
- Tie-Down and Lifting Rings
- Lockable Fuel and Oil Caps
- 110V Plug with Differential Circuit-Breaker

OPTIONAL FEATURES

- Cold Weather Kit
- SMS: Safe Man System
- Work Light on Platform
- Drive Safety Orientation System
- Generator 3.0 kW or 5.0 kW



MANITOU
HANDLING YOUR WORLD

MANITOU NORTH AMERICA, LLC • PO Box 179 • West Bend, WI 53095
Tel: 262-334-9461 • Fax: 262-338-7517 • www.manitou.com

This publication in no way constitutes an offer and the company reserves the right to alter specifications without notice.
©2019 Manitou North America, LLC. Manitou. All rights reserved.

ATJ 46_4pg_06/19