

# GTC-1600

**160 TON MAX. CRANE CAPACITY**





February 2023. Unless otherwise specified, all information in this brochure refers to a standard crane equipment, and it is intended as general information only. No liability is assumed. Errors reserved. Product specifications and prices are subject to changes without notice. The photographs and/or drawings in this brochure are for illustrative purposes only. For correct and safe crane operation, the original operating manual and lifting capacity charts are essential. Failure to follow the corresponding Operator's Manual when using our equipment or failure to otherwise act responsibly may result in property damage, serious injury or death. The sole warranty applicable with respect to our equipment is the standard warranty as per general terms and conditions of sales and service (ask your local Tadano dealer for details), and Tadano makes no other warranty, express or implied. All rights reserved. Any use of the trademarks, logos, brand names and model names used herein is prohibited.

© Tadano Ltd. 2023

# Contents

<b>Specifications</b>	<b>5</b>
Vehicle dimensions .....	6-7
General dimensions .....	7
<b>Transportation</b>	<b>9</b>
Transport dimensions .....	10
Transport plan .....	11
Transport dimensions .....	12-14
<b>Operation</b>	<b>15</b>
Speeds and gradeability .....	16
Main winch and auxiliary winch performance.....	16
Machine weights.....	17
<b>MB:</b> Main boom.....	18-22
<b>HLJ:</b> Heavy lift jib.....	24-26
<b>FJ:</b> Folding swing-away jib.....	28-34
<b>WP:</b> Work platform .....	36-37
Notes to Lifting Capacity .....	38
<b>Technical Description</b>	<b>39</b>
Basic machine .....	40
Superstructure .....	40
Crawler carrier .....	41
Optional equipment.....	41

# Key



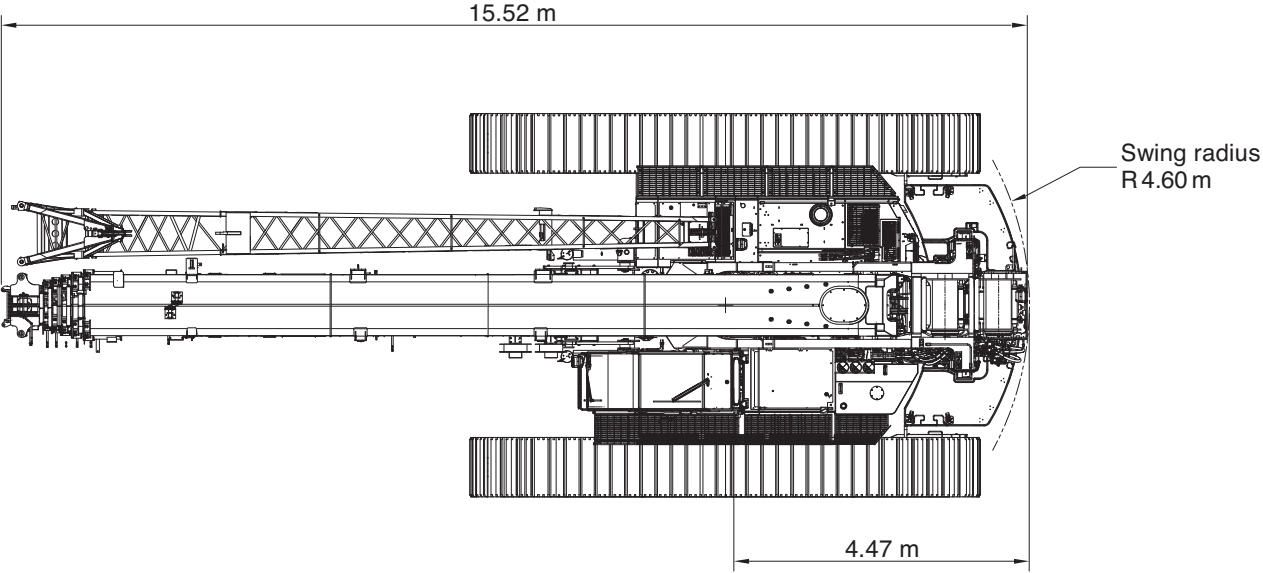
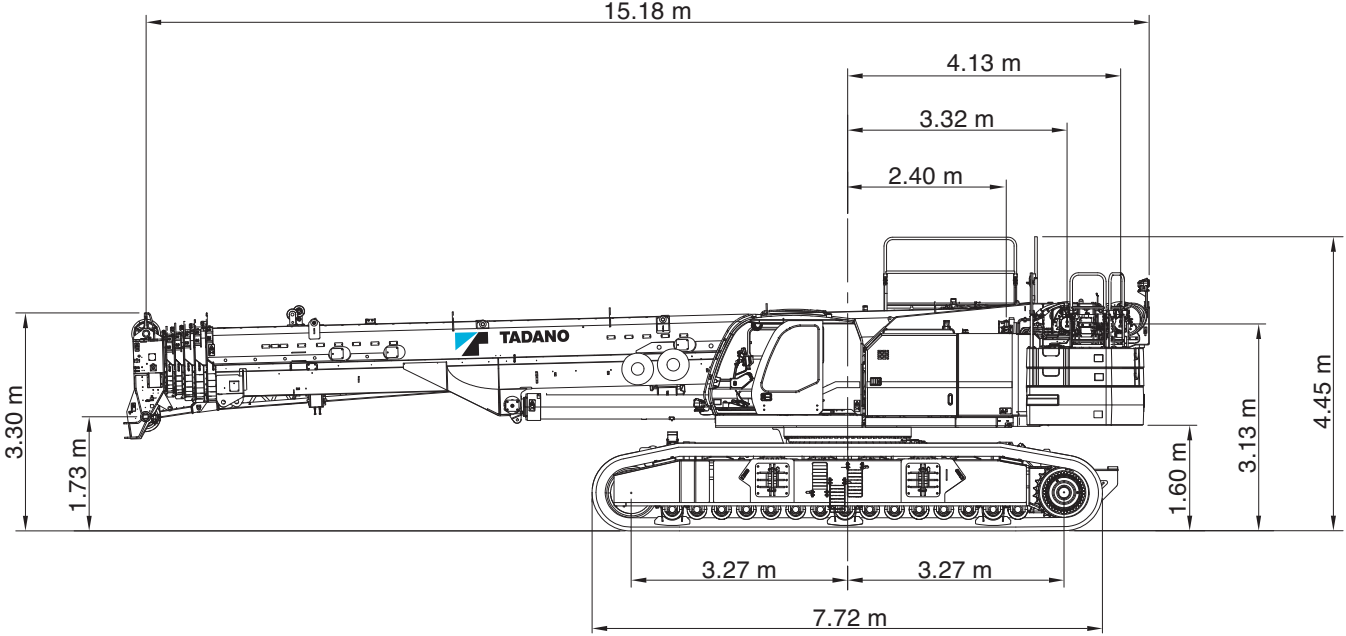
	Counterweight		Jib offset angle
	Radius		Max. line pull
	Main boom		Rope length
	Folding swing-away jib		Rope
	Insert		Hook block
	Carbody counterweight		Assembly weight
	Overall width		Transport variant
	Roll / list angle		Wire rope layer
	Total weight		Total wire rope
	Hook block		Winch layer diameter
	Overhaul ball		Wind speed in m/s
	Travel speed		
	Gradeability		
	Working speeds		

# SPECIFICATIONS



# Specifications

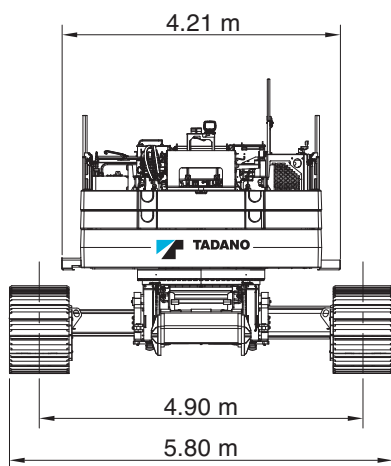
## Vehicle dimensions



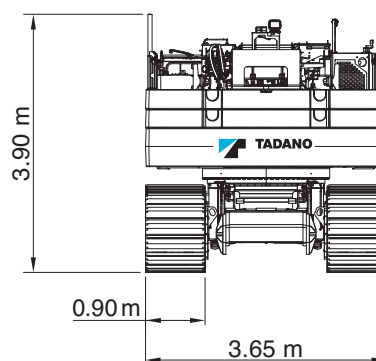
# Specifications

## Vehicle dimensions

Tracks extended



Tracks retracted



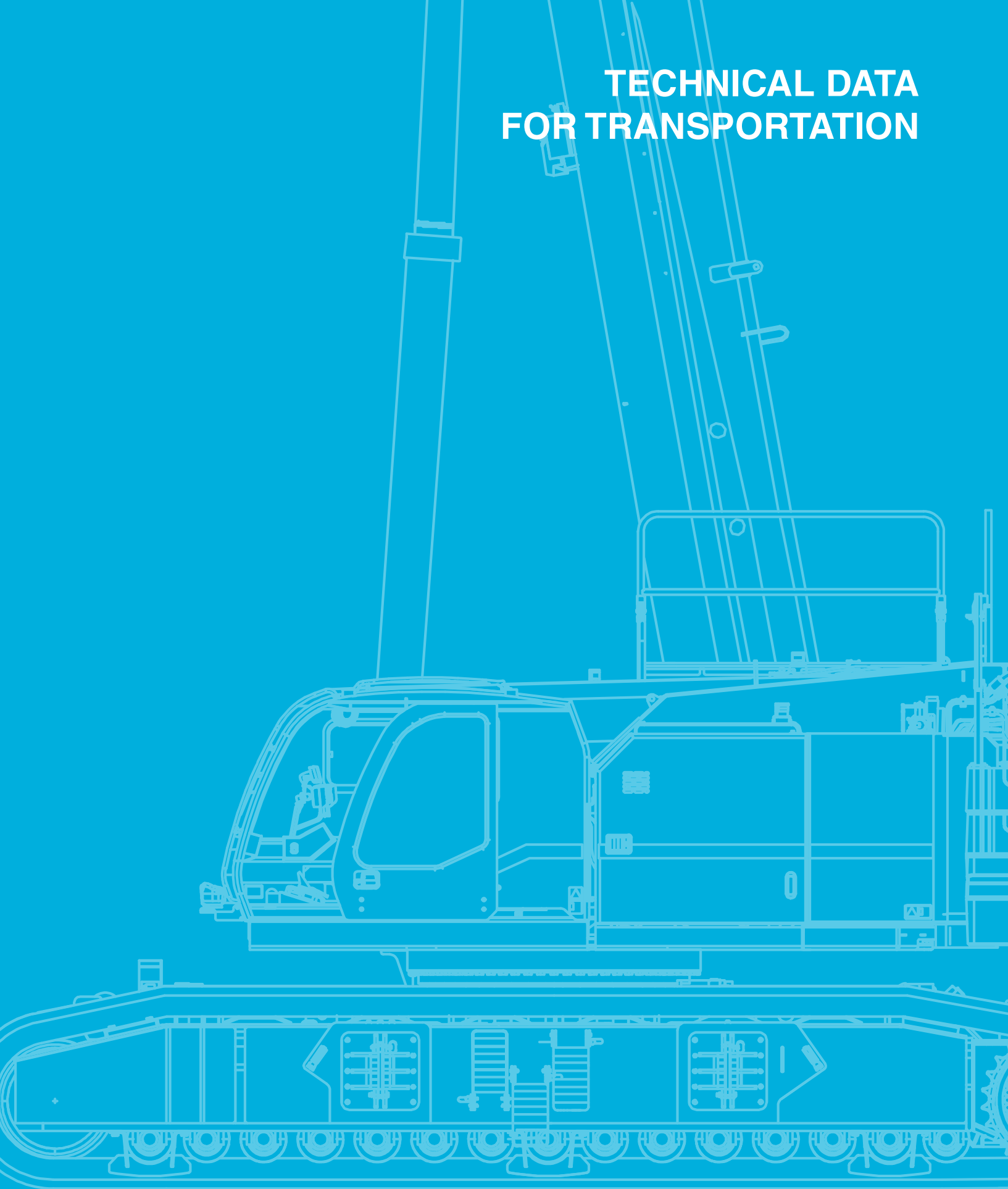
## General dimensions

Overall length	15.52 m
Overall width (tracks extended)	5.80 m
Overall width (tracks retracted)	3.65 m
Overall width (tracks removed)	3.30 m
Overall height (working)	4.45 m



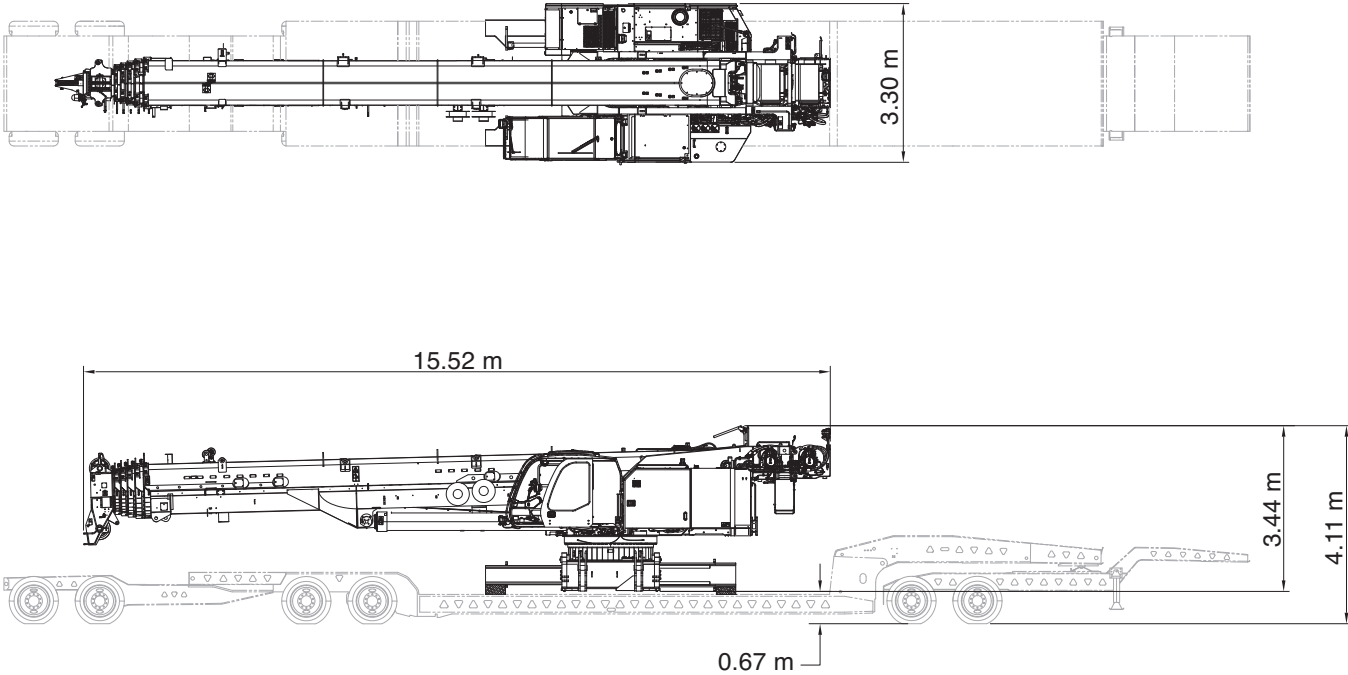


# TECHNICAL DATA FOR TRANSPORTATION




# Transportation

## Transport dimensions



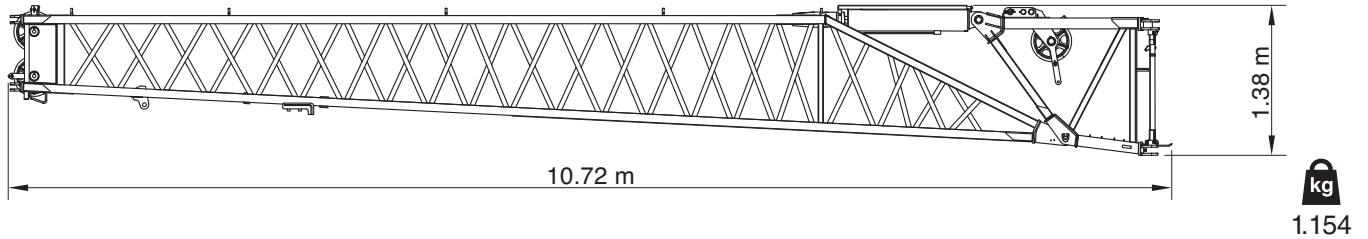
# Transportation

Transport plan							
	kg	Dimensions L x W x H					
			1	2	3	4	5
Crane transporter (with 2 winches, boom, wire rope, aux. nose sheave)	43.416	15.52 m x 3.30 m x 3.44 m	X				
Left track frame	13.708	7.72 m x 1.09 m x 1.33 m		X			
Right track frame	13.708	7.72 m x 1.09 m x 1.33 m			X		
Counterweight – Base assembly	18.280	1.83 m x 3.65 m x 1.78 m				X	
Counterweight – Mid	6.668	0.55 m x 3.65 m x 1.78 m					X
Counterweight – Upper	6.849	0.43 m x 3.65 m x 1.78 m					X
Carbody counterweight – Front counterweight with toolbox	5.978	1.34 m x 1.29 m x 0.91 m		X			
Carbody counterweight – Rear counterweight with shelf, 2 bars, 4 outrigger pads	5.742	2.69 m x 1.34 m x 0.95 m			X		
Heavy lift jib	657	2.67 m x 3.76 m x 0.96 m					X
Main jib	1.154	10.72 m x 1.38 m x 0.96 m					X
Fly jib	341	7.86 m x 0.53 m x 0.86 m					X
Jib insert	439	7.10 m x 0.96 m x 1.33 m					X
Jib insert	439	7.10 m x 0.96 m x 1.33 m					X
Hook block - 100 t	1.091	1.60 m x 0.57 m x 0.66 m				X	
Hook block - 45 t	606	1.34 m x 0.54 m x 0.53 m					X
Overhaul ball - 10 t	300	0.96 m x 0.28 m x 0.28 m			X		
Miscellaneous items (crate)	227	1.22 m x 0.91 m x 0.91 m				X	
<b>Total net weight on trailer (kg)</b>			<b>43.416</b>	<b>19.686</b>	<b>19.750</b>	<b>19.598</b>	<b>17.153</b>

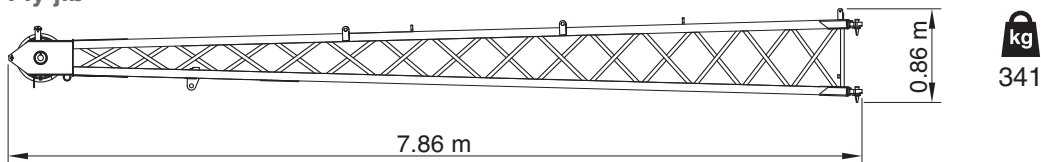
# Transportation

## Transport dimensions

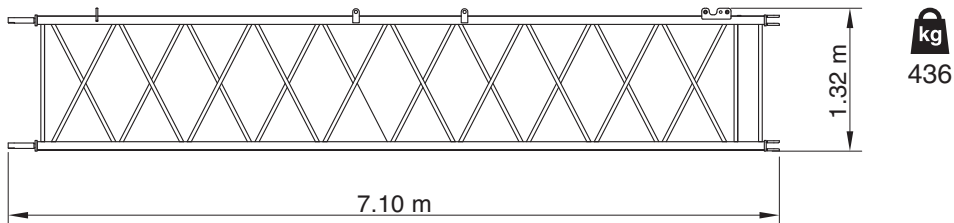
### Main jib



### Fly jib

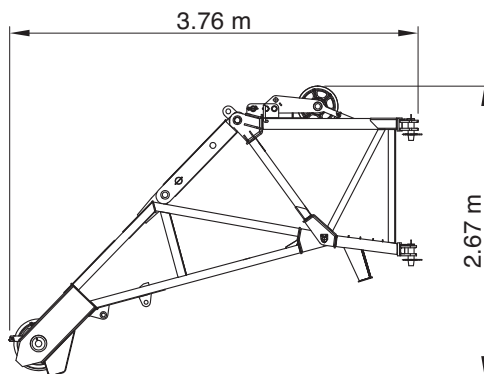


### Jib insert

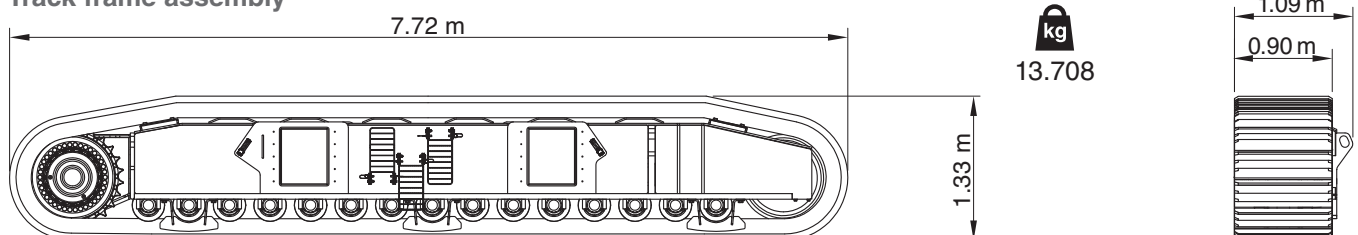


### Heavy lift jib

kg  
657



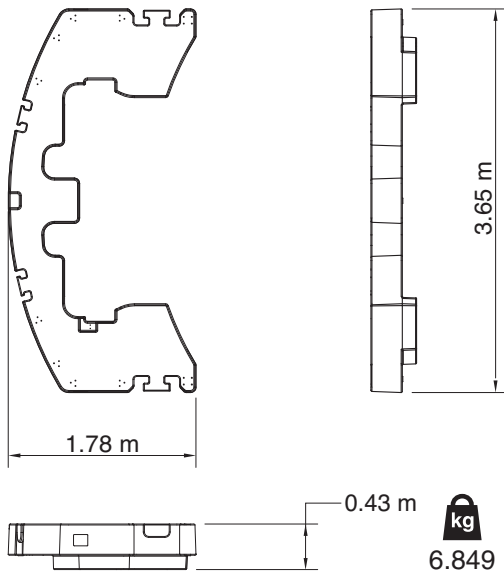
### Track frame assembly



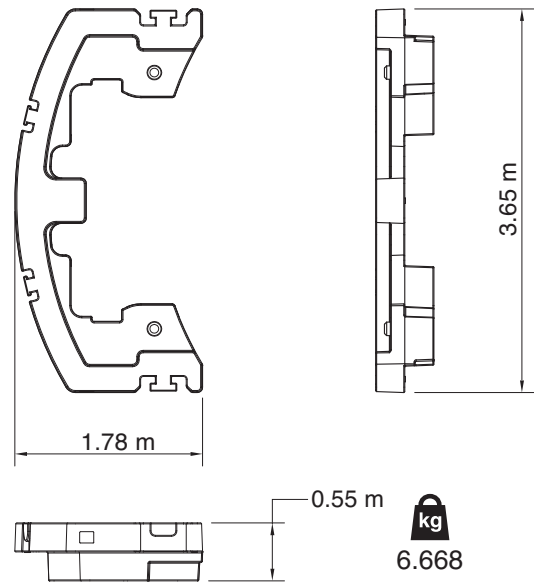
# Transportation

## Transport dimensions

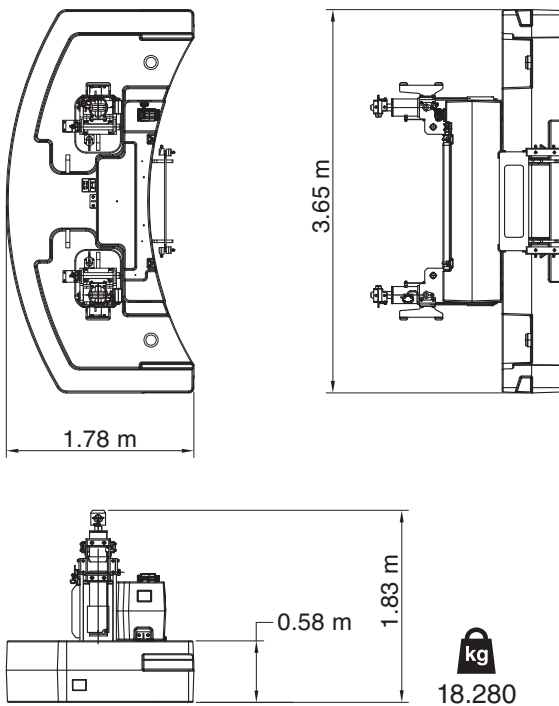
### Upper counterweight



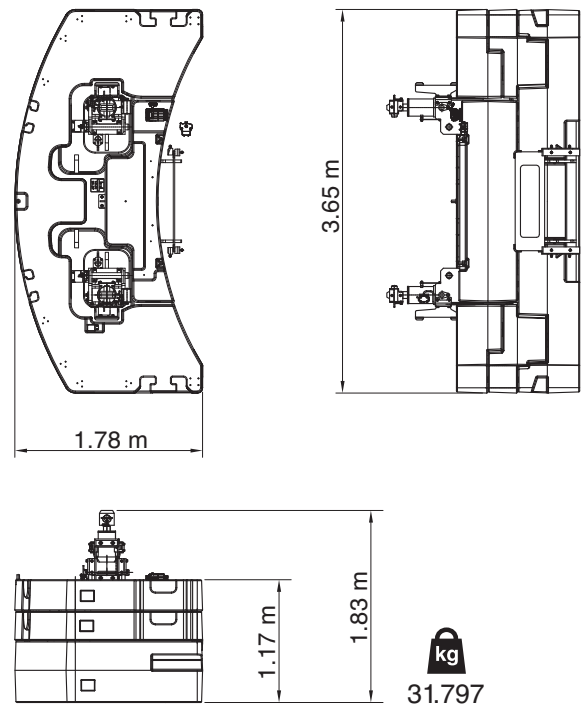
### Mid counterweight



### Counterweight configuration 18.3 t



### Counterweight configuration 31.8 t

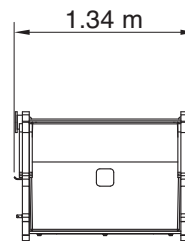
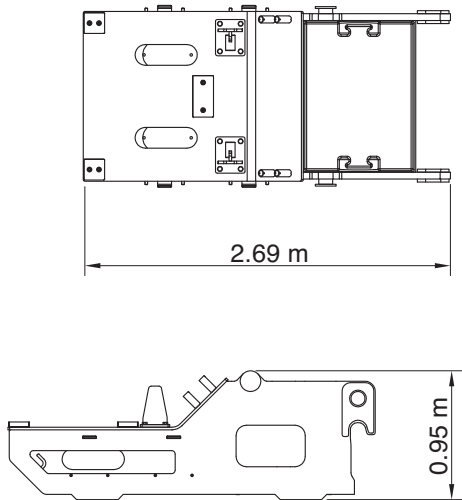


# Transportation

## Transport dimensions

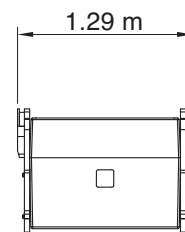
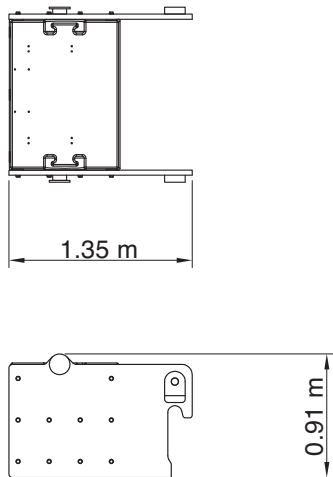
### Rear carbody counterweight with shelf

  
5.742

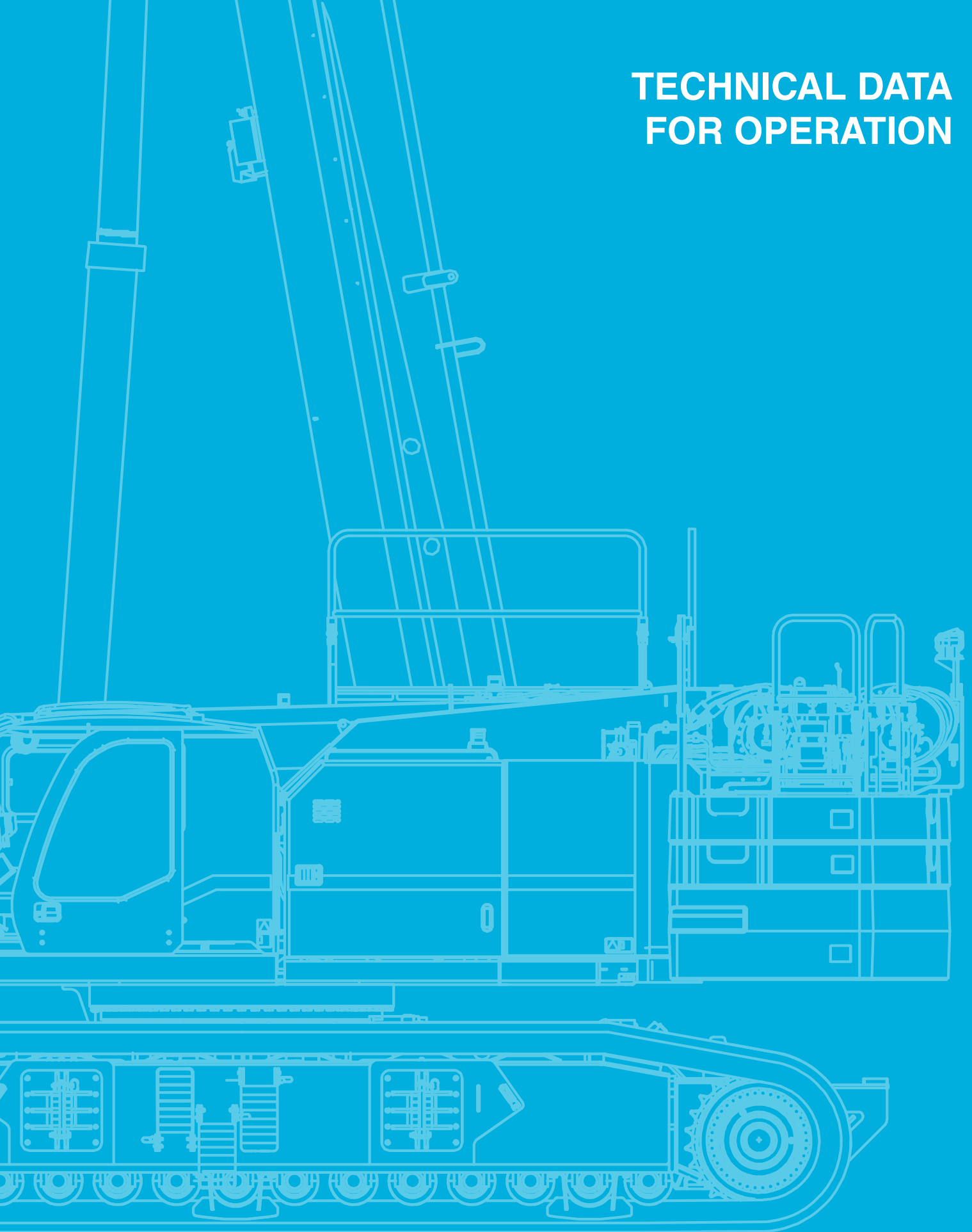


### Front carbody counterweight

  
5.978



# TECHNICAL DATA FOR OPERATION

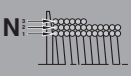


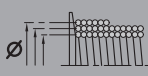
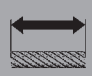



# Operation

## Speeds and gradeability

	1.0 km/hr / 2.5 km/hr		52 %
---	-----------------------	---	------

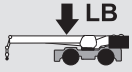






## Main winch and auxiliary winch performance

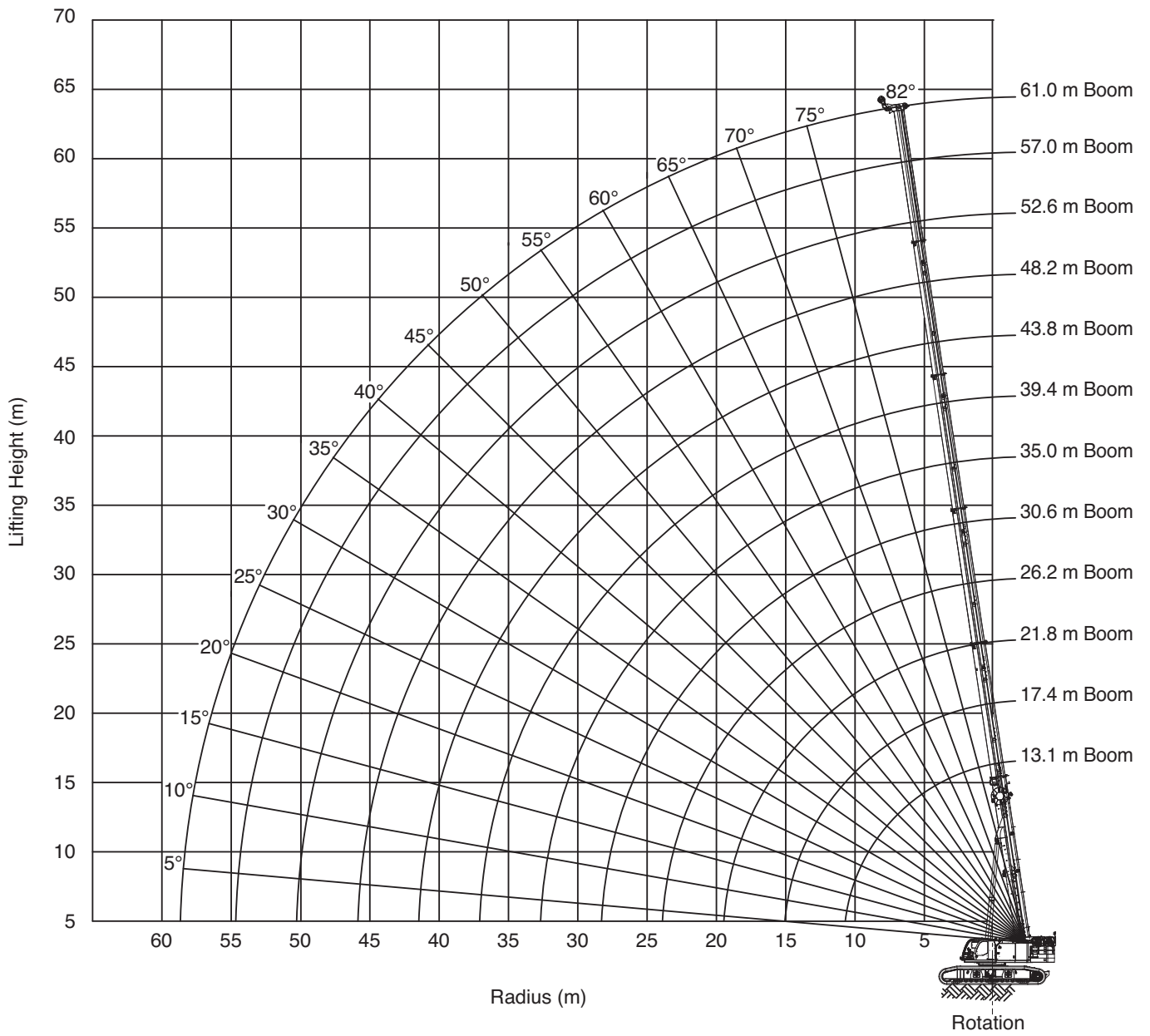
					
1	97.1 kN	high: 103.4 m/min. normal: 74.2 m/min.	401.9 mm	44.8 m	44.8 m
2	88.4 kN	high: 112.2 m/min. normal: 80.5 m/min.	441.7 mm	48.6 m	93.5 m
3	81.1 kN	high: 121.0 m/min. normal: 86.8 m/min.	481.5 mm	52.5 m	145.9 m
4	74.9 kN	high: 129.8 m/min. normal: 93.2 m/min.	521.3 mm	56.3 m	202.2 m
5	69.6 kN	high: 138.6 m/min. normal: 99.5 m/min.	561.1 mm	60.1 m	262.3 m
6	65.0 kN	high: 147.4 m/min. normal: 105.8 m/min.	600.9 mm	63.9 m	326.3 m

Wire Rope: 19 mm diameter rotation resistant. Line pulls are not based on wire rope strength.



# Operation

Machine weights		
	Standard equipment package	115.842 kg
		31.797 kg
<b>Standard Crane</b>		
with 6 section, 61.0 m boom, full counterweight, 2 winches with wire rope, auxiliary nose sheave, and 900 mm 3-bar semi grouser track shoes		114.349 kg
<b>Standard Crane</b>		
with 6 section, 61.0 m boom, 2 winches with wire rope, auxiliary nose sheave (counterweights and crawlers removed)		43.416 kg
<b>Standard Crane</b>		
with 2 winches and wire rope (boom, hoist cylinder, counterweights and crawlers removed)		25.816 kg
<b>Optional Equipment</b>		
Heavy lift jib: 3.6 m		657 kg
Main jib: 10.3 m		1.154 kg
Jib tip: 7.8 m		341 kg
Lattice jib insert: 2 pieces, 7 m		878 kg
Auxiliary nose sheave		63 kg
 100 t	 7	1.091 kg
 45 t	 3	606 kg
 10 t		300 kg
Track frame with 900 mm 3-bar semi grouser track shoes		13.708 kg
Track frame with 900 mm flat track shoes		13.294 kg
Track frame with 1000 mm 3-bar semi grouser track shoes		14.072 kg
Track frame with 1000 mm flat track shoes		13.620 kg



## Tracks fully extended – 360° – Up to 0.5° slope

31.8 t		5.80 m		0.5°		8.9 m/s		360°		EN13000		
13,1 m	17,4 m	21,8 m	26,2 m	30,6 m	35,0 m	39,4 m	43,8 m	48,2 m	52,6 m	57,0 m	61,0 m	
m	t	t	t	t	t	t	t	t	t	t	t	m
2,5	145,0*	90,7	79,0	-	-	-	-	-	-	-	-	2,5
3	110,6*	90,7	79,0	37,0	-	-	-	-	-	-	-	3
3,5	101,5*	90,7	79,0	66,0	-	-	-	-	-	-	-	3,5
4	94,1	90,7	79,0	66,0	37,0	-	-	-	-	-	-	4
4,5	87,5	84,4	79,0	66,0	48,2	-	-	-	-	-	-	4,5
5	81,6	78,8	76,4	66,0	48,2	35,2	-	-	-	-	-	5
5,5	76,4	73,9	71,5	64,9	48,2	35,2	-	-	-	-	-	5,5
6	71,6	69,5	67,3	61,9	48,2	37,9	-	-	-	-	-	6
6,5	67,2	65,6	63,5	59,1	48,2	36,2	30,1	-	-	-	-	6,5
7	63,1	62,0	59,7	55,3	48,2	35,2	30,1	-	-	-	-	7
7,5	59,2	58,7	54,9	51,0	48,2	35,2	29,7	22,1	-	-	-	7,5
8	54,7	54,1	50,7	47,2	45,7	35,2	28,9	23,9	-	-	-	8
9	45,3	45,3	43,8	41,9	39,9	35,2	27,3	23,6	17,2	-	-	9
10	38,0	38,4	38,2	37,5	35,3	34,4	25,3	22,5	18,9	13,5	-	10
11	-	33,2	33,0	33,5	31,5	31,1	23,6	21,6	18,9	15,0	-	11
12	-	30,2	28,9	29,6	29,3	28,1	22,3	20,7	18,1	15,0	12,0	-
14	-	24,0	24,6	24,2	24,3	23,4	20,6	18,6	16,6	14,9	12,0	10,4
16	-	-	20,2	20,3	19,9	19,3	18,9	16,7	15,3	13,9	12,0	10,4
18	-	-	17,0	17,0	16,7	16,6	16,5	15,1	14,0	12,9	11,8	10,4
20	-	-	-	14,5	14,1	14,6	14,0	13,5	12,7	11,9	11,0	10,1
22	-	-	-	12,5	12,2	12,6	12,0	11,6	11,5	11,1	10,3	9,5
24	-	-	-	-	10,5	11,0	10,4	10,7	10,2	9,8	9,6	8,9
26	-	-	-	-	9,2	9,7	9,1	9,4	8,9	9,2	8,7	8,3
28	-	-	-	-	8,2	8,5	8,0	8,3	8,3	8,1	7,6	7,6
30	-	-	-	-	-	7,6	7,0	7,4	7,4	7,1	6,6	6,6
32	-	-	-	-	-	7,2	6,3	6,9	6,6	6,3	5,8	5,8
34	-	-	-	-	-	-	5,9	6,2	5,8	5,5	5,1	5,1
36	-	-	-	-	-	-	5,6	5,5	5,2	4,9	4,4	4,4
38	-	-	-	-	-	-	-	5,0	4,6	4,3	3,9	3,9
40	-	-	-	-	-	-	-	4,5	4,1	3,8	3,4	3,4
42	-	-	-	-	-	-	-	-	3,7	3,4	2,9	2,9
44	-	-	-	-	-	-	-	-	3,3	3,0	2,5	2,5
46	-	-	-	-	-	-	-	-	-	2,6	2,2	2,1
48	-	-	-	-	-	-	-	-	-	2,3	1,8	1,8
50	-	-	-	-	-	-	-	-	-	2,0	1,5	1,5
52	-	-	-	-	-	-	-	-	-	-	1,3	1,2
54	-	-	-	-	-	-	-	-	-	-	-	1,0

\* Requires additional lifting equipment

## Tracks fully extended – 360° – Up to 4° slope

31.8 t		5.80 m		4°		8.9 m/s		360°		EN13000													
13,1 m		17,4 m		21,8 m		26,2 m		30,6 m		35,0 m		39,4 m		43,8 m		48,2 m		52,6 m		57,0 m		61,0 m	
m	t	t	t	t	t	t	t	t	t	t	t	t	t	t	t	t	t	t	t	t	t	t	m
2,5	94,2	79,5	61,9	-	-	-	-	-	-	-	-	-	-	-	-	-	-	-	-	-	-	-	2,5
3	94,2	79,5	61,9	35,4	-	-	-	-	-	-	-	-	-	-	-	-	-	-	-	-	-	-	3
3,5	94,2	79,5	61,9	45,5	-	-	-	-	-	-	-	-	-	-	-	-	-	-	-	-	-	-	3,5
4	94,1	79,5	61,9	45,5	26,6	-	-	-	-	-	-	-	-	-	-	-	-	-	-	-	-	-	4
4,5	87,5	79,5	61,9	45,5	31,2	-	-	-	-	-	-	-	-	-	-	-	-	-	-	-	-	-	4,5
5	81,6	71,7	61,9	45,5	31,2	22,9	-	-	-	-	-	-	-	-	-	-	-	-	-	-	-	-	5
5,5	76,1	65,0	58,0	45,5	31,2	22,9	-	-	-	-	-	-	-	-	-	-	-	-	-	-	-	-	5,5
6	69,0	60,2	53,4	45,5	31,2	22,9	-	-	-	-	-	-	-	-	-	-	-	-	-	-	-	-	6
6,5	62,1	55,4	49,4	44,1	31,2	22,9	19,5	-	-	-	-	-	-	-	-	-	-	-	-	-	-	-	6,5
7	56,0	51,2	45,9	41,1	31,2	22,9	19,5	-	-	-	-	-	-	-	-	-	-	-	-	-	-	-	7
7,5	50,9	47,5	42,8	40,0	31,2	22,9	19,5	15,3	-	-	-	-	-	-	-	-	-	-	-	-	-	-	7,5
8	46,6	43,6	40,1	37,6	31,2	22,9	19,5	15,3	-	-	-	-	-	-	-	-	-	-	-	-	-	-	8
9	39,8	37,3	35,3	33,5	30,4	22,9	19,5	15,3	13,6	-	-	-	-	-	-	-	-	-	-	-	-	-	9
10	34,8	33,4	30,7	30,1	27,4	22,9	19,5	15,3	13,6	11,3	-	-	-	-	-	-	-	-	-	-	-	-	10
11	-	29,8	28,3	26,7	26,4	22,9	19,5	15,2	13,6	11,3	-	-	-	-	-	-	-	-	-	-	-	-	11
12	-	26,6	26,1	25,0	23,9	22,1	19,2	14,8	13,6	11,3	8,2	-	-	-	-	-	-	-	-	-	-	-	12
14	-	21,9	21,4	20,7	19,7	18,5	18,1	14,0	13,0	11,3	8,2	5,3	-	-	-	-	-	-	-	-	-	-	14
16	-	-	18,0	17,4	16,5	16,5	15,5	13,0	12,3	10,8	8,2	5,3	-	-	-	-	-	-	-	-	-	-	16
18	-	-	15,5	14,9	14,1	14,2	13,3	12,1	11,7	10,3	8,2	5,3	-	-	-	-	-	-	-	-	-	-	18
20	-	-	-	12,9	12,2	12,3	11,4	11,3	10,7	9,8	8,2	5,3	-	-	-	-	-	-	-	-	-	-	20
22	-	-	-	11,7	10,6	10,8	10,0	10,0	9,3	9,3	8,2	5,3	-	-	-	-	-	-	-	-	-	-	22
24	-	-	-	-	9,3	9,5	8,7	8,8	8,6	8,3	7,6	5,3	-	-	-	-	-	-	-	-	-	-	24
26	-	-	-	-	8,4	8,5	7,7	7,8	7,7	7,3	6,7	5,3	-	-	-	-	-	-	-	-	-	-	26
28	-	-	-	-	8,1	7,7	6,8	7,3	6,9	6,4	5,8	5,3	-	-	-	-	-	-	-	-	-	-	28
30	-	-	-	-	-	7,3	6,4	6,6	6,1	5,7	5,1	5,0	-	-	-	-	-	-	-	-	-	-	30
32	-	-	-	-	-	6,8	6,1	5,9	5,4	5,0	4,5	4,4	-	-	-	-	-	-	-	-	-	-	32
34	-	-	-	-	-	-	5,7	5,4	4,9	4,5	3,9	3,8	-	-	-	-	-	-	-	-	-	-	34
36	-	-	-	-	-	-	5,2	4,9	4,4	4,0	3,4	3,3	-	-	-	-	-	-	-	-	-	-	36
38	-	-	-	-	-	-	-	4,4	3,9	3,5	3,0	2,9	-	-	-	-	-	-	-	-	-	-	38
40	-	-	-	-	-	-	-	-	4,1	3,5	3,1	2,5	4,0	-	-	-	-	-	-	-	-	-	40
42	-	-	-	-	-	-	-	-	-	3,2	2,8	2,1	4,2	-	-	-	-	-	-	-	-	-	42
44	-	-	-	-	-	-	-	-	-	2,9	2,4	1,8	4,4	-	-	-	-	-	-	-	-	-	44
46	-	-	-	-	-	-	-	-	-	-	2,2	1,5	4,6	-	-	-	-	-	-	-	-	-	46
48	-	-	-	-	-	-	-	-	-	-	1,9	1,3	4,8	-	-	-	-	-	-	-	-	-	48
50	-	-	-	-	-	-	-	-	-	-	1,8	1,0	5,0	-	-	-	-	-	-	-	-	-	50

## Tracks fully extended – 360° – Up to 0.5° slope

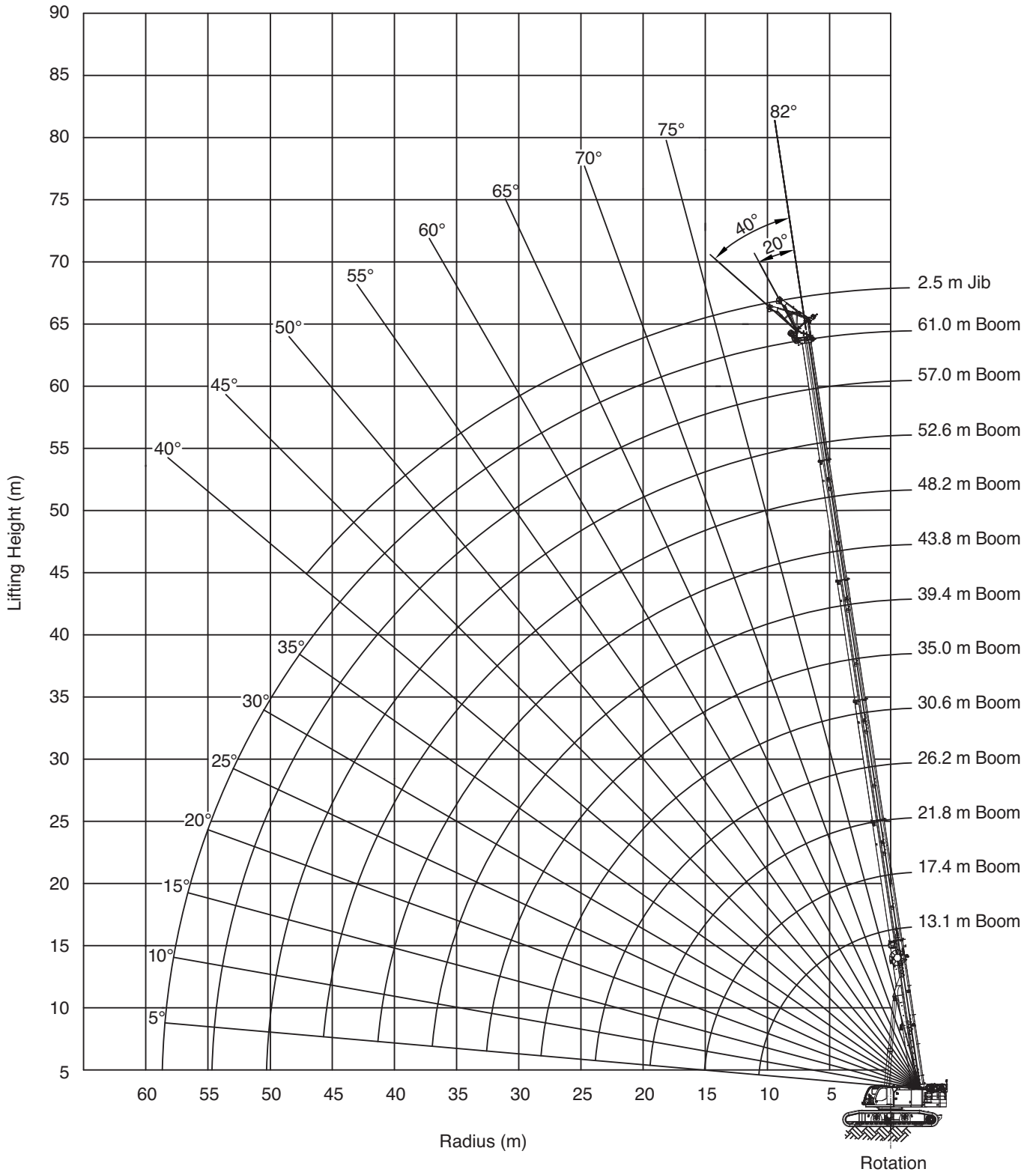
0 t		5.80 m		0.5°		8.9 m/s		360°		EN13000													
13,1 m		17,4 m		21,8 m		26,2 m		30,6 m		35,0 m		39,4 m		43,8 m		48,2 m		52,6 m		57,0 m		61,0 m	
m	t	t	t	t	t	t	t	t	t	t	t	t	t	t	t	t	t	t	t	t	t	t	m
2,5	94,2	90,7	79,0	-	-	-	-	-	-	-	-	-	-	-	-	-	-	-	-	-	-	-	2,5
3	94,2	90,7	79,0	37,0	-	-	-	-	-	-	-	-	-	-	-	-	-	-	-	-	-	-	3
3,5	94,2	81,6	71,6	62,1	-	-	-	-	-	-	-	-	-	-	-	-	-	-	-	-	-	-	3,5
4	78,3	68,1	60,0	55,0	37,0	-	-	-	-	-	-	-	-	-	-	-	-	-	-	-	-	-	4
4,5	64,8	57,5	51,4	47,7	42,7	-	-	-	-	-	-	-	-	-	-	-	-	-	-	-	-	-	4,5
5	55,0	49,5	44,7	42,0	37,8	35,2	-	-	-	-	-	-	-	-	-	-	-	-	-	-	-	-	5
5,5	47,5	43,2	39,4	37,3	35,8	32,5	-	-	-	-	-	-	-	-	-	-	-	-	-	-	-	-	5,5
6	41,7	38,2	37,0	35,1	32,3	29,4	-	-	-	-	-	-	-	-	-	-	-	-	-	-	-	-	6
6,5	36,9	35,7	34,0	31,9	29,4	28,4	26,0	-	-	-	-	-	-	-	-	-	-	-	-	-	-	-	6,5
7	33,0	32,2	30,9	29,1	26,9	26,1	23,9	-	-	-	-	-	-	-	-	-	-	-	-	-	-	-	7
7,5	29,0	29,3	28,2	26,7	24,8	24,1	22,1	20,3	-	-	-	-	-	-	-	-	-	-	-	-	-	-	7,5
8	25,7	26,7	26,0	25,0	22,9	22,4	20,5	19,5	-	-	-	-	-	-	-	-	-	-	-	-	-	-	8
9	20,7	22,4	22,2	21,9	20,0	20,1	18,7	17,8	16,0	-	-	-	-	-	-	-	-	-	-	-	-	-	9
10	17,0	18,6	19,3	19,1	18,3	17,7	16,8	15,9	14,8	13,5	-	-	-	-	-	-	-	-	-	-	-	-	10
11	-	15,7	16,6	16,9	16,2	15,7	14,9	14,2	13,2	12,4	-	-	-	-	-	-	-	-	-	-	-	-	11
12	-	13,4	14,3	15,0	14,5	14,1	13,3	12,7	11,8	11,0	10,1	-	-	-	-	-	-	-	-	-	-	-	12
14	-	10,1	10,9	11,5	11,6	11,4	10,8	10,3	9,6	8,9	8,1	7,8	-	-	-	-	-	-	-	-	-	-	14
16	-	-	8,5	9,1	9,1	9,3	8,9	8,5	7,8	7,2	6,5	6,3	-	-	-	-	-	-	-	-	-	-	16
18	-	-	6,7	7,3	7,4	7,5	7,3	7,1	6,4	5,9	5,2	5,0	18	-	-	-	-	-	-	-	-	-	18
20	-	-	-	6,0	6,0	6,1	6,0	5,8	5,3	4,8	4,2	4,0	20	-	-	-	-	-	-	-	-	-	20
22	-	-	-	4,9	4,9	5,0	4,9	4,7	4,4	3,9	3,3	3,2	22	-	-	-	-	-	-	-	-	-	22
24	-	-	-	-	4,0	4,1	4,0	3,9	3,5	3,2	2,6	2,5	24	-	-	-	-	-	-	-	-	-	24
26	-	-	-	-	3,3	3,4	3,2	3,1	2,8	2,5	1,9	1,9	26	-	-	-	-	-	-	-	-	-	26
28	-	-	-	-	2,7	2,8	2,6	2,5	2,1	1,9	1,4	-	28	-	-	-	-	-	-	-	-	-	28
30	-	-	-	-	-	2,3	2,1	2,0	1,6	1,3	-	-	30	-	-	-	-	-	-	-	-	-	30
32	-	-	-	-	-	1,9	1,6	1,5	1,2	-	-	-	32	-	-	-	-	-	-	-	-	-	32
34	-	-	-	-	-	-	1,3	1,1	-	-	-	-	34	-	-	-	-	-	-	-	-	-	34

## Tracks fully retracted – 360° – Up to 1.5° slope

31.8 t		3.65 m		1.5°		8.9 m/s		360°		EN13000													
13,1 m		17,4 m		21,8 m		26,2 m		30,6 m		35,0 m		39,4 m		43,8 m		48,2 m		52,6 m		57,0 m		61,0 m	
m	t	t	t	t	t	t	t	t	t	t	t	t	t	t	t	t	t	t	t	t	t	t	m
6	44,2	-	-	-	-	-	-	-	-	-	-	-	-	-	-	-	-	-	-	-	-	-	6
6,5	39,6	-	-	-	-	-	-	-	-	-	-	-	-	-	-	-	-	-	-	-	-	-	6,5
7	35,6	-	-	-	-	-	-	-	-	-	-	-	-	-	-	-	-	-	-	-	-	-	7
7,5	32,3	32,9	-	-	-	-	-	-	-	-	-	-	-	-	-	-	-	-	-	-	-	-	7,5
8	29,5	30,4	-	-	-	-	-	-	-	-	-	-	-	-	-	-	-	-	-	-	-	-	8
9	24,9	25,8	25,9	-	-	-	-	-	-	-	-	-	-	-	-	-	-	-	-	-	-	-	9
10	21,4	22,3	22,6	21,9	20,5	-	-	-	-	-	-	-	-	-	-	-	-	-	-	-	-	-	10
11	-	19,5	19,9	19,7	18,5	18,3	16,9	-	-	-	-	-	-	-	-	-	-	-	-	-	-	-	11
12	-	17,2	17,6	18,1	16,7	16,6	15,3	15,0	14,5	13,5	-	-	-	-	-	-	-	-	-	-	-	-	12
14	-	13,7	14,2	14,6	14,0	14,1	12,9	13,1	12,3	11,6	10,7	10,3	-	-	-	-	-	-	-	-	-	-	14
16	-	-	11,6	12,1	12,0	11,9	11,6	11,2	10,5	9,8	9,0	8,7	8,7	-	-	-	-	-	-	-	-	-	16
18	-	-	9,7	10,1	10,0	10,0	9,8	9,6	9,0	8,4	7,6	7,4	7,4	-	-	-	-	-	-	-	-	-	18
20	-	-	-	8,6	8,5	8,5	8,4	8,2	7,7	7,2	6,5	6,3	6,3	-	-	-	-	-	-	-	-	-	20
22	-	-	-	7,4	7,3	7,3	7,1	7,0	6,6	6,2	5,5	5,4	5,4	-	-	-	-	-	-	-	-	-	22
24	-	-	-	-	6,3	6,3	6,1	6,0	5,6	5,2	4,7	4,6	4,6	-	-	-	-	-	-	-	-	-	24
26	-	-	-	-	5,5	5,5	5,3	5,1	4,7	4,4	3,9	3,9	3,9	-	-	-	-	-	-	-	-	-	26
28	-	-	-	-	4,8	4,8	4,6	4,4	4,0	3,7	3,3	3,2	3,2	-	-	-	-	-	-	-	-	-	28
30	-	-	-	-	-	4,2	3,9	3,8	3,4	3,1	2,6	2,6	2,6	-	-	-	-	-	-	-	-	-	30
32	-	-	-	-	-	3,7	3,4	3,2	2,9	2,6	2,1	2,1	2,1	-	-	-	-	-	-	-	-	-	32
34	-	-	-	-	-	-	3,0	2,8	2,4	2,1	1,7	1,6	1,6	-	-	-	-	-	-	-	-	-	34
36	-	-	-	-	-	-	2,6	2,4	2,0	1,7	1,3	1,2	1,2	-	-	-	-	-	-	-	-	-	36
38	-	-	-	-	-	-	-	2,0	1,6	1,3	-	-	-	-	-	-	-	-	-	-	-	-	38
40	-	-	-	-	-	-	-	1,7	1,3	1,0	-	-	-	-	-	-	-	-	-	-	-	-	40
42	-	-	-	-	-	-	-	-	1,0	-	-	-	-	-	-	-	-	-	-	-	-	-	42



## Heavy lift jib





# Operation

Tracks fully extended – 360° – Up to 0.5° slope – with heavy lift jib

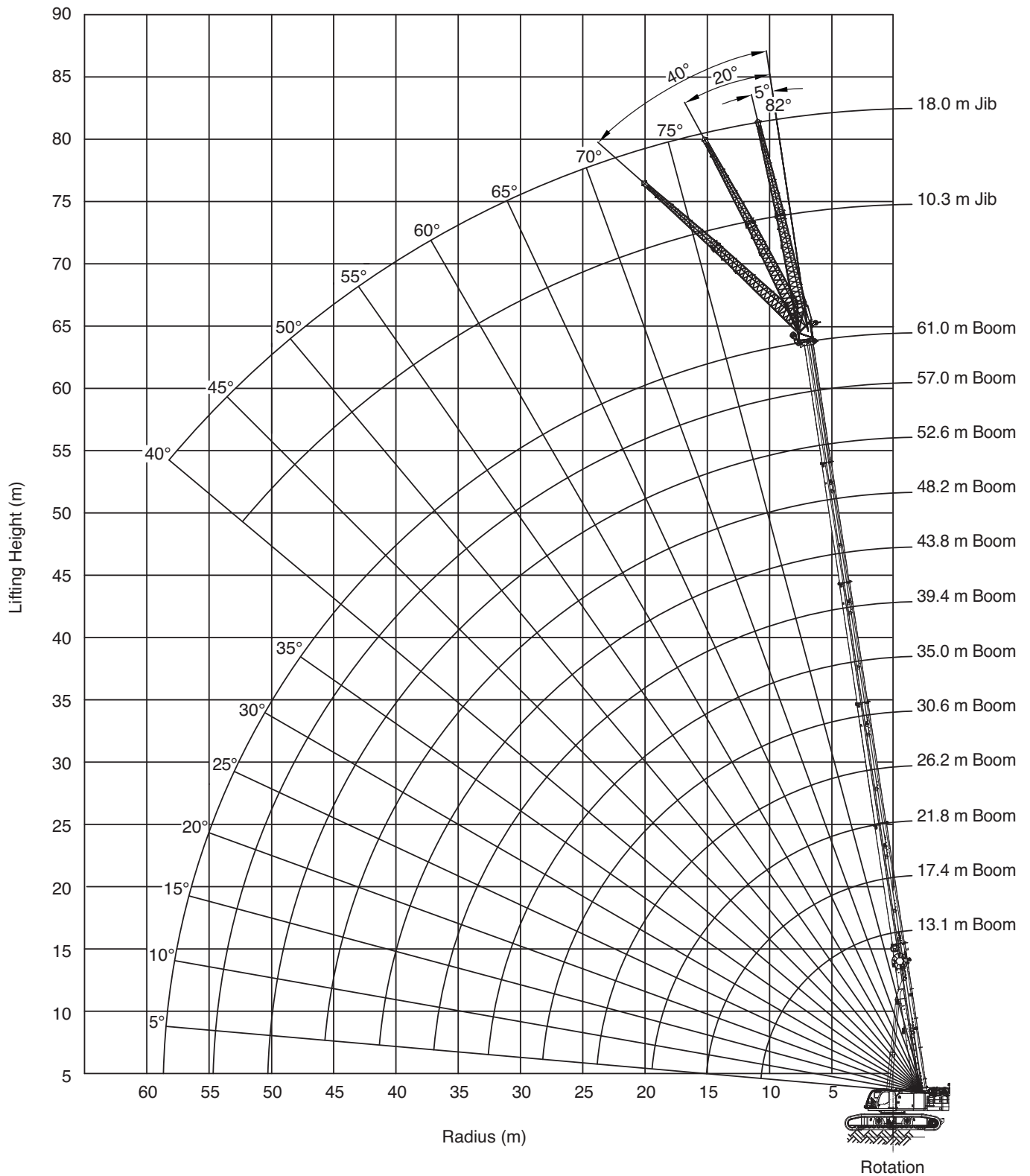
31.8 t		5.80 m		0.5°		3.60 m		8.9 m/s		360°		EN13000
35.0 m		52.6 m				57.0 m		61.0 m				
20°		40°		20°		40°		20°		40°		
m	t	t	t	t	t	t	t	t	t	t	m	
6	22,2	-	-	-	-	-	-	-	-	-	6	
7	22,2	18,0	-	-	-	-	-	-	-	-	7	
8	21,6	17,9	-	-	-	-	-	-	-	-	8	
9	21,1	17,6	-	-	-	-	-	-	-	-	9	
10	20,6	17,3	-	-	-	-	-	-	-	-	10	
11	20,2	17,1	13,1	-	-	-	-	-	-	-	11	
12	19,7	16,8	13,1	12,6	-	-	-	-	-	-	12	
14	19,0	16,4	12,6	12,6	10,8	10,5	9,4	-	-	-	14	
16	18,3	16,1	11,8	11,9	10,5	10,5	9,4	9,2	-	-	16	
18	16,1	15,8	11,0	11,0	9,9	10,0	9,0	9,0	-	-	18	
20	13,5	13,7	10,2	10,2	9,3	9,4	8,5	8,6	-	-	20	
22	11,5	11,6	9,5	9,5	8,7	8,8	8,0	8,1	-	-	22	
24	9,8	9,9	8,8	8,8	8,2	8,2	7,5	7,6	-	-	24	
26	8,4	8,5	8,1	8,1	7,6	7,7	7,0	7,1	-	-	26	
28	7,3	7,3	7,0	7,1	7,1	7,2	6,6	6,6	-	-	28	
30	6,3	-	6,0	6,1	6,3	6,4	6,1	6,2	-	-	30	
32	5,4	-	5,1	5,2	5,4	5,5	5,4	5,5	-	-	32	
34	4,7	-	4,4	4,5	4,7	4,8	4,7	4,7	-	-	34	
36	-	-	3,7	3,8	4,0	4,1	4,0	4,1	-	-	36	
38	-	-	3,1	3,2	3,4	3,5	3,4	3,5	-	-	38	
40	-	-	2,6	2,7	2,9	3,0	2,9	2,9	-	-	40	
42	-	-	2,1	2,2	2,4	2,5	2,4	2,5	-	-	42	
44	-	-	1,7	1,7	2,0	2,0	2,0	2,0	-	-	44	
46	-	-	1,3	-	1,6	1,6	1,6	1,6	-	-	46	
48	-	-	1,0	-	1,3	1,3	1,3	1,3	-	-	48	
50	-	-	-	-	0,9	-	0,9	1,0	-	-	50	

Tracks fully extended – 360° – Up to 2.5° slope – with heavy lift jib

31.8 t		5.80 m		2.5°		3.60 m		8.9 m/s		360°		EN13000
35.0 m		52.6 m				57.0 m		61.0 m				
20°		40°		20°		40°		20°		40°		
m	t	t	t	t	t	t	t	t	t	t	m	
6	19,9	-	-	-	-	-	-	-	-	-	6	
7	19,9	17,8	-	-	-	-	-	-	-	-	7	
8	19,9	17,5	-	-	-	-	-	-	-	-	8	
9	19,9	17,3	-	-	-	-	-	-	-	-	9	
10	19,9	17,0	-	-	-	-	-	-	-	-	10	
11	19,6	16,8	11,6	-	-	-	-	-	-	-	11	
12	19,2	16,6	11,3	11,4	-	-	-	-	-	-	12	
14	18,6	16,2	10,7	10,8	-	-	-	-	-	-	14	
16	16,8	15,9	10,1	10,1	9,3	9,3	-	-	8,2	-	16	
18	14,1	14,3	9,5	9,5	9,0	8,9	7,9	8,0	7,6	7,6	18	
20	12,0	12,1	8,9	8,9	8,5	8,5	8,1	8,0	7,6	7,6	20	
22	10,2	10,4	8,3	8,4	8,1	8,0	7,2	7,2	6,8	6,9	22	
24	8,8	8,9	7,8	7,9	7,6	7,6	7,2	7,1	6,8	6,9	24	
26	7,6	7,7	6,9	7,0	7,2	7,1	6,4	6,5	6,1	6,1	26	
28	6,6	6,6	5,9	6,1	6,8	6,7	6,3	6,1	5,7	5,8	28	
30	5,7	-	5,1	5,2	6,3	6,1	5,4	5,3	5,2	5,3	30	
32	5,0	-	4,4	4,4	5,4	5,3	4,7	4,6	4,5	4,6	32	
34	4,3	-	3,7	3,8	4,7	4,6	4,0	3,9	3,9	3,9	34	
36	-	-	3,1	3,2	4,0	3,9	3,4	3,4	3,3	3,4	36	
38	-	-	2,6	2,7	3,4	3,4	2,9	2,9	2,8	2,9	38	
40	-	-	2,2	2,2	2,9	2,9	2,4	2,4	2,3	2,4	40	
42	-	-	1,7	1,8	2,4	2,4	2,0	2,0	1,9	2,0	42	
44	-	-	1,4	1,4	2,0	2,0	1,6	1,6	1,5	1,6	44	
46	-	-	1,0	-	1,6	1,6	1,3	1,3	1,2	1,2	46	
48	-	-	-	-	1,0	1,0	1,0	1,0	0,9	0,9	48	



## Folding jib



# Operation

Tracks fully extended – 360° – Up to 0.5° slope – Folding jib

31.8 t		5.80 m		0.5°		10.3 m		8.9 m/s		360°		EN13000	
m	35.0 m			52.6 m			57.0 m			61.0 m			m
	5°	20°	40°	5°	20°	40°	5°	20°	40°	5°	20°	40°	
9	14,3	10,7	-	-	-	-	-	-	-	-	-	-	9
10	13,8	10,3	-	-	-	-	-	-	-	-	-	-	10
11	13,4	9,9	-	-	-	-	-	-	-	-	-	-	11
12	13,0	9,6	7,3	7,2	-	-	-	-	-	-	-	-	12
14	12,2	9,1	7,0	7,2	-	-	6,2	-	-	-	-	-	14
16	11,2	8,6	6,7	7,2	7,2	-	6,2	6,2	-	5,5	-	-	16
18	10,4	8,1	6,5	7,2	7,2	6,8	6,2	6,2	-	5,5	5,5	-	18
20	9,7	7,7	6,3	7,2	7,0	6,6	6,2	5,9	5,7	5,5	5,4	-	20
22	9,1	7,4	6,2	6,9	6,6	6,4	5,9	5,7	5,5	5,4	5,2	-	22
24	8,6	7,1	6,0	6,6	6,3	6,1	5,6	5,4	5,2	5,1	4,9	4,8	24
26	8,1	6,8	5,9	6,3	6,1	5,9	5,4	5,2	5,0	4,9	4,7	4,6	26
28	7,7	6,6	5,8	6,0	5,8	5,6	5,1	5,0	4,8	4,7	4,5	4,4	28
30	7,2	6,4	5,7	5,6	5,5	5,4	4,9	4,8	4,7	4,5	4,3	4,2	30
32	6,3	6,2	5,6	5,3	5,3	5,1	4,7	4,6	4,5	4,3	4,2	4,0	32
34	5,6	5,8	5,6	5,0	5,0	4,9	4,5	4,4	4,3	4,1	4,0	3,9	34
36	4,9	5,1	5,2	4,4	4,7	4,7	4,3	4,2	4,1	3,9	3,8	3,8	36
38	4,3	4,5	-	3,8	4,1	4,4	4,0	4,1	4,0	3,7	3,7	3,6	38
40	3,8	3,9	-	3,3	3,6	3,8	3,5	3,8	3,9	3,5	3,5	3,5	40
42	3,4	-	-	2,8	3,1	3,3	3,1	3,3	3,5	3,0	3,2	3,4	42
44	-	-	-	2,4	2,6	2,8	2,6	2,8	3,0	2,6	2,8	3,0	44
46	-	-	-	2,0	2,2	2,4	2,2	2,4	2,6	2,2	2,4	2,6	46
48	-	-	-	1,7	1,8	2,0	1,9	2,1	2,2	1,8	2,0	2,2	48
50	-	-	-	1,4	1,5	1,6	1,6	1,7	1,9	1,5	1,7	1,8	50
52	-	-	-	1,1	1,2	-	1,3	1,4	1,5	1,2	1,4	1,5	52
54	-	-	-	0,8	0,9	-	1,0	1,1	1,2	1,0	1,1	1,2	54
56	-	-	-	-	-	-	0,8	0,9	-	-	0,8	0,9	56

# Operation

Tracks fully extended – 360° – Up to 0.5° slope – Folding jib

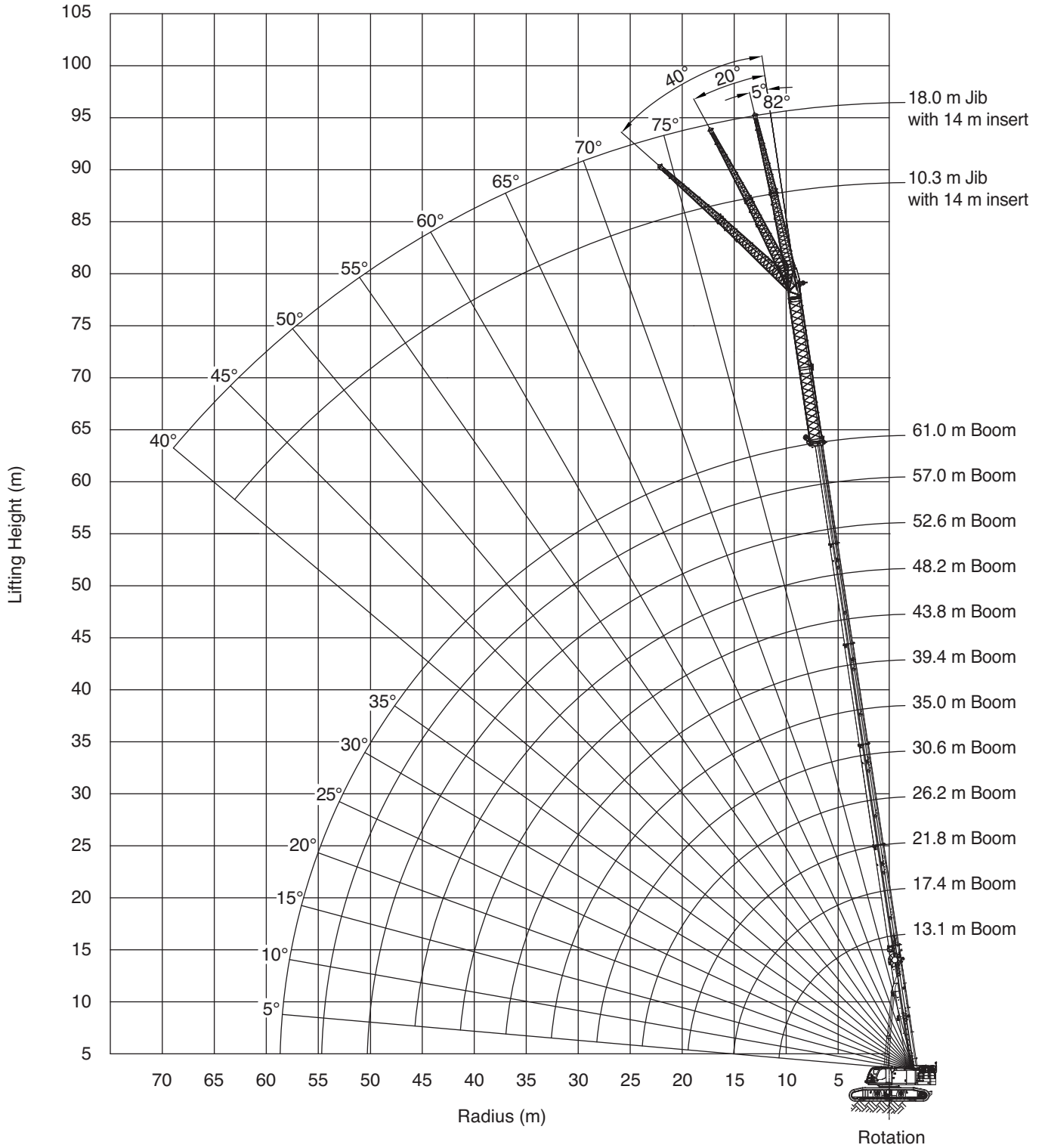
31.8 t		5.80 m		0.5°		18.0 m		8.9 m/s		360°		EN13000	
m	35.0 m			52.6 m			57.0 m			61.0 m			m
	5°	20°	40°	5°	20°	40°	5°	20°	40°	5°	20°	40°	
9	6,4	-	-	-	-	-	-	-	-	-	-	-	9
10	6,4	-	-	-	-	-	-	-	-	-	-	-	10
11	6,4	-	-	-	-	-	-	-	-	-	-	-	11
12	6,4	-	-	-	-	-	-	-	-	-	-	-	12
14	6,4	5,3	-	-	-	-	-	-	-	-	-	-	14
16	6,2	5,0	-	4,7	-	-	-	-	-	-	-	-	16
18	5,9	4,8	3,7	4,7	-	-	4,0	-	-	3,7	-	-	18
20	5,6	4,5	3,6	4,7	4,4	-	4,0	-	-	3,7	-	-	20
22	5,3	4,3	3,5	4,7	4,2	-	4,0	4,0	-	3,7	-	-	22
24	5,0	4,1	3,4	4,7	4,1	-	4,0	4,0	-	3,7	3,7	-	24
26	4,8	4,0	3,3	4,7	4,0	3,4	4,0	3,9	-	3,7	3,7	-	26
28	4,6	3,8	3,3	4,6	3,9	3,3	4,0	3,7	3,2	3,7	3,7	3,2	28
30	4,3	3,7	3,2	4,4	3,8	3,3	4,0	3,7	3,2	3,7	3,6	3,1	30
32	4,1	3,6	3,2	4,3	3,7	3,2	3,9	3,6	3,1	3,6	3,4	3,1	32
34	4,0	3,5	3,1	4,2	3,6	3,1	3,7	3,5	3,1	3,4	3,3	3,0	34
36	3,8	3,4	3,1	4,0	3,5	3,1	3,6	3,4	3,0	3,3	3,2	3,0	36
38	3,6	3,3	3,0	3,9	3,4	3,0	3,5	3,3	3,0	3,2	3,0	2,9	38
40	3,5	3,2	3,0	3,7	3,3	3,0	3,4	3,2	2,9	3,0	2,9	2,8	40
42	3,4	3,1	3,0	3,2	3,2	2,9	3,2	3,2	2,9	2,9	2,8	2,7	42
44	3,3	3,1	3,0	2,8	3,2	2,9	3,0	3,0	2,8	2,8	2,7	2,6	44
46	3,1	3,1	-	2,4	2,8	2,9	2,6	2,9	2,8	2,5	2,6	2,6	46
48	2,8	2,9	-	2,1	2,4	2,7	2,2	2,6	2,8	2,1	2,5	2,5	48
50	2,5	-	-	1,7	2,0	2,3	1,9	2,2	2,5	1,8	2,1	2,4	50
52	-	-	-	1,4	1,7	1,9	1,6	1,9	2,1	1,5	1,8	2,1	52
54	-	-	-	1,2	1,4	1,6	1,3	1,6	1,8	1,2	1,5	1,8	54
56	-	-	-	0,9	1,1	1,3	1,1	1,3	1,5	1,0	1,2	1,5	56
58	-	-	-	-	0,9	1,0	0,8	1,0	1,2	-	1,0	1,2	58
60	-	-	-	-	-	-	-	0,8	0,9	-	-	0,9	60



# Operation



with inserts





# Operation

Tracks fully extended – 360° – Up to 0.5° slope – with insert + folding jib

31.8 t		5.80 m		0.5°		18.0 m		7.0 m		8.9 m/s		360°		EN13000			
35.0 m		52.6 m						57.0 m			61.0 m						
5°		20°		40°		5°		20°		40°		5°		20°		40°	
m	t	t	t	t	t	t	t	t	t	t	t	t	t	t	t	t	m
11	5,4	-	-	-	-	-	-	-	-	-	-	-	-	-	-	-	11
12	5,4	-	-	-	-	-	-	-	-	-	-	-	-	-	-	-	12
14	5,4	-	-	-	-	-	-	-	-	-	-	-	-	-	-	-	14
16	5,4	4,5	-	-	-	-	-	-	-	-	-	-	-	-	-	-	16
18	5,1	4,4	-	-	3,9	-	-	-	-	-	-	-	-	-	-	-	18
20	4,8	4,1	3,3	-	3,9	-	-	3,4	-	-	-	-	-	-	-	-	20
22	4,5	3,8	3,2	-	3,9	3,6	-	3,4	-	-	-	3,1	-	-	-	-	22
24	4,2	3,6	3,1	-	3,9	3,6	-	3,4	3,2	-	-	3,1	-	-	-	-	24
26	3,9	3,4	2,9	-	3,9	3,5	-	3,4	3,2	-	-	3,1	2,9	-	-	-	26
28	3,7	3,2	2,8	-	3,8	3,4	2,8	3,4	3,2	-	-	3,1	2,9	-	-	-	28
30	3,4	3,0	2,7	-	3,6	3,2	2,8	3,3	3,1	2,7	-	3,0	2,9	-	-	-	30
32	3,2	2,9	2,6	-	3,5	3,1	2,8	3,1	3,0	2,7	-	2,9	2,8	2,6	-	-	32
34	3,1	2,7	2,5	-	3,4	3,0	2,7	3,0	2,9	2,7	-	2,8	2,7	2,6	-	-	34
36	2,9	2,6	2,4	-	3,3	2,9	2,6	2,9	2,8	2,6	-	2,7	2,6	2,6	-	-	36
38	2,7	2,5	2,3	-	3,2	2,8	2,5	2,8	2,7	2,5	-	2,5	2,5	2,5	-	-	38
40	2,6	2,4	2,2	-	3,1	2,7	2,4	2,8	2,6	2,5	-	2,4	2,4	2,4	-	-	40
42	2,5	2,3	2,2	-	3,0	2,6	2,4	2,7	2,5	2,4	-	2,3	2,3	2,3	-	-	42
44	2,4	2,2	2,1	-	2,8	2,5	2,3	2,6	2,5	2,4	-	2,2	2,2	2,2	-	-	44
46	2,3	2,1	2,0	-	2,6	2,5	2,3	2,5	2,4	2,3	-	2,2	2,1	2,1	-	-	46
48	2,2	2,1	2,0	-	2,3	2,4	2,2	2,4	2,3	2,2	-	2,1	2,0	2,0	-	-	48
50	2,1	2,0	2,0	-	1,9	2,2	2,2	2,0	2,2	2,2	-	1,9	2,0	1,9	-	-	50
52	2,0	1,9	-	-	1,6	1,9	2,1	1,7	2,0	2,1	-	1,6	1,9	1,9	-	-	52
54	1,9	1,9	-	-	1,3	1,6	1,9	1,5	1,7	2,0	-	1,4	1,7	1,8	-	-	54
56	1,9	1,9	-	-	1,1	1,3	1,6	1,2	1,5	1,7	-	1,1	1,4	1,6	-	-	56
58	-	-	-	-	0,8	1,1	1,3	1,0	1,2	1,4	-	0,9	1,1	1,4	-	-	58
60	-	-	-	-	-	0,8	1,0	-	1,0	1,1	-	-	0,9	1,1	-	-	60
62	-	-	-	-	-	-	-	-	-	0,9	-	-	-	0,8	-	-	62

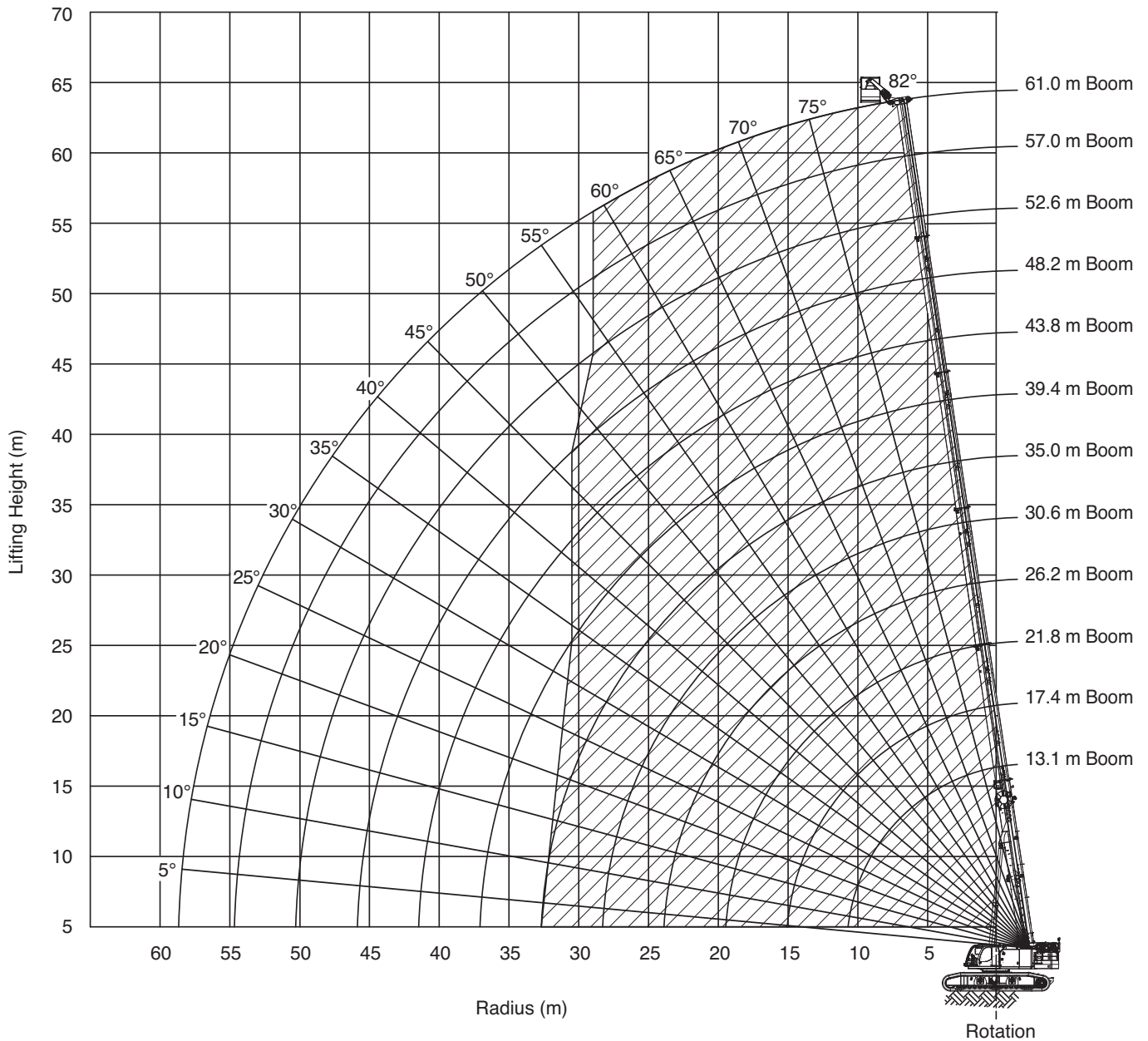
# Operation

Tracks fully extended – 360° – Up to 0.5° slope – with insert + folding jib

31.8 t		5.80 m		0.5°		18.0 m		14.0 m		8.9 m/s		360°		EN13000	
m	35.0 m			52.6 m			57.0 m			61.0 m			m		
	5°	20°	40°	5°	20°	40°	5°	20°	40°	5°	20°	40°			
12	4,4	-	-	-	-	-	-	-	-	-	-	-	-	12	
14	4,4	-	-	-	-	-	-	-	-	-	-	-	-	14	
16	4,3	-	-	-	-	-	-	-	-	-	-	-	-	16	
18	4,0	3,6	-	-	-	-	-	-	-	-	-	-	-	18	
20	3,8	3,5	-	3,2	-	-	-	-	-	-	-	-	-	20	
22	3,6	3,3	2,9	3,2	-	-	2,8	-	-	-	-	-	-	22	
24	3,4	3,1	2,7	3,1	2,7	-	2,8	-	-	-	2,1	-	-	24	
26	3,2	2,9	2,6	3,0	2,7	-	2,7	-	-	-	2,1	-	-	26	
28	3,0	2,7	2,4	2,9	2,7	-	2,6	2,4	-	-	2,1	-	-	28	
30	2,7	2,5	2,3	2,8	2,6	2,4	2,6	2,4	-	-	2,1	2,1	-	30	
32	2,6	2,3	2,1	2,7	2,5	2,3	2,5	2,4	2,2	-	2,1	2,1	-	32	
34	2,4	2,2	2,0	2,5	2,4	2,2	2,4	2,3	2,2	-	2,1	2,1	2,1	34	
36	2,2	2,1	1,9	2,4	2,3	2,1	2,3	2,2	2,1	-	2,1	2,1	2,1	36	
38	2,1	1,9	1,8	2,3	2,2	2,1	2,2	2,1	2,1	-	2,0	2,0	2,0	38	
40	1,9	1,8	1,7	2,3	2,1	2,0	2,1	2,1	2,0	-	1,9	1,9	1,9	40	
42	1,8	1,7	1,6	2,2	2,0	1,9	2,0	2,0	1,9	-	1,8	1,9	1,9	42	
44	1,7	1,6	1,5	2,1	2,0	1,8	2,0	1,9	1,9	-	1,8	1,8	1,8	44	
46	1,6	1,5	1,5	2,0	1,9	1,7	1,9	1,8	1,8	-	1,7	1,7	1,7	46	
48	1,5	1,5	1,4	1,9	1,8	1,7	1,8	1,8	1,7	-	1,6	1,6	1,6	48	
50	1,4	1,4	1,3	1,9	1,7	1,6	1,7	1,7	1,7	-	1,5	1,5	1,6	50	
52	1,4	1,3	1,3	1,7	1,6	1,6	1,7	1,7	1,6	-	1,4	1,5	1,5	52	
54	1,3	1,2	1,2	1,4	1,6	1,5	1,4	1,6	1,5	-	1,3	1,4	1,4	54	
56	1,2	1,2	-	1,1	1,4	1,4	1,2	1,5	1,5	-	1,1	1,3	1,4	56	
58	1,1	1,1	-	0,9	1,1	1,4	1,0	1,2	1,4	-	0,8	1,1	1,3	58	
60	1,1	1,1	-	-	0,9	1,1	-	1,0	1,2	-	-	0,9	1,1	60	
62	1,0	1,0	-	-	-	0,8	-	-	1,0	-	-	-	0,9	62	



## WP750 Work platform



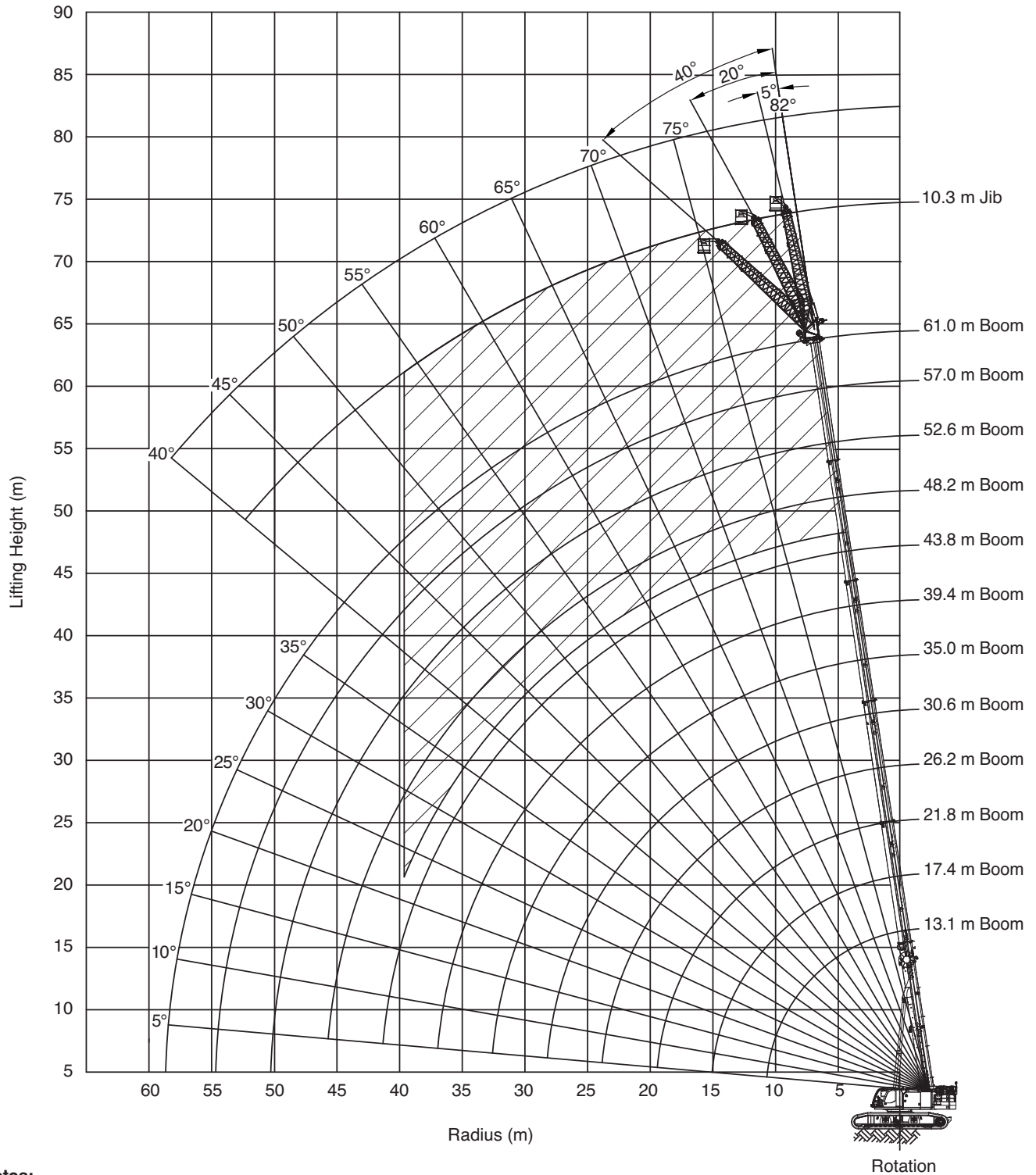
**Notes:**

1. It is permissible to leave the jibs stowed on the boom while operating with work platform mounted to the main boom.
2. The hook block(s) must be removed when using the work platform.

**WARNING:** Lifting a load during work platform operation is **not** allowed.

**WARNING:** Travelling the crane with person(s) in the work platform is **not** allowed.

## WP750 Work platform



**Notes:**

1. It is permissible to leave the jib section stowed on the boom while operating with work platform mounted to the jib.
2. The hook block(s) must be removed when using the work platform.

**WARNING:** Lifting a load during work platform operation is **not** allowed.

**WARNING:** Travelling the crane with person(s) in the work platform is **not** allowed.

# Notes to Lifting Capacity

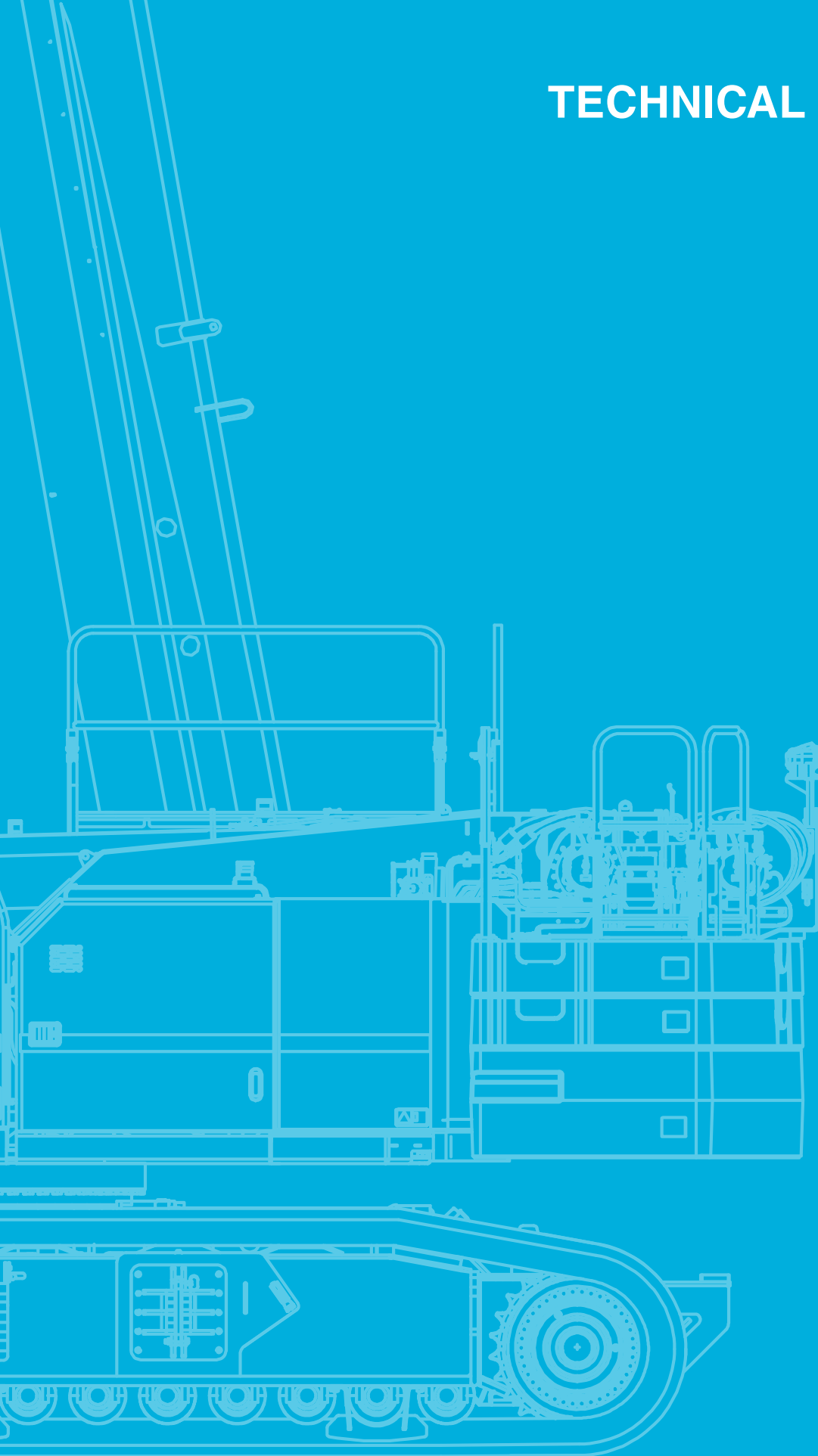
## Definitions and Explanations

- Load capacity values in these charts are stated in kg x 1000.
- All ratings are for 360° of rotation unless otherwise specified on the chart.
- Load radius is defined as the horizontal distance from the axis of rotation (with no load) to the center of the lifting device after load is applied in meter (m).
- Boom height dimensions are measured from ground to center of lower boom head sheave in meter (m).
- Boom angle / boom length relationships given are an approximation of the resulting load radius, which should be an accurate measurement.
- Boom angle is the included angle between the longitudinal axis of the boom base section and the horizontal axis, after lifting load. The boom angle before lifting should be slightly greater than desired to account for boom deflection.
- Boom positions without rated loads in the charts are prohibited. These areas are indicated by an “\*” and are susceptible to instability either in the forward direction or the backwards direction.
- It is acceptable to telescope boom with a load within the limits of rated capacities. However, boom angle, system hydraulic pressure, and/or boom lubrication may affect operation.
- Deduct the weight of the hook block, hook/ball, slings, spreader bar, or other suspended equipment from the listed rated capacities. This includes lifting accessories stowed on the boom such as jib, extension, and auger.
- Unless otherwise noted, travelling in low speed is allowed for all rated loads- reduce travel speed to minimize dynamic effects on the crane from swinging load, side loading, etc.
- Structural lifting capacities are based on DIN 15018 parts 2 and 3 and F.E.M. Stability lifting capacities are based on DIN 15019 part 2 / ISO 4305 / EN 13000.

## Note

Data published herein is intended as a guide only and shall not be construed to warrant applicability for lifting purposes. Crane operation is subject to the computer charts and operation manual both supplied with the crane.

# TECHNICAL DESCRIPTION



# Technical Description

## Basic machine

<b>Boom</b>	Six section boom with single-cylinder pinned telescoping system. Retracted length: 13.1 m Extended length: 61.0 m Extension time: 536 seconds Boom head: Seven, 400 mm diameter cast steel sheaves on heavy-duty roller bearings, and two lead-in sheaves.
<b>Auxiliary boom head</b>	Single 445 mm diameter cast steel sheave. Mounts to boom head for single line work. Swings to side for storage.
<b>Load moment indicator</b>	Tadano AML-E load moment indicator and anti-two block system: OPTI-WIDTH™ – OPTIMAL lifting performance at any track width. Control function shutdown with audible and visual warnings. Full color touch screen provides continuous display of working boom length, boom angle, working load radius, tip height, swing position, parts-of-line (operator set), machine track configuration, relative load moment, maximum permissible load and actual load. Anti-two block weight allows quick reeving of hook block. Configurable working range limits with automatic soft stop. External 3-color LED light stack indicates safe working conditions.
<b>Telematics</b>	Equipped with HELLO-NET data logging and monitoring system accessible via the internet.

## Superstructure

High-strength steel structure precision machined to accept boom and swing components. Centralized plumbing of lubrication points for slew bearing and boom pivot pin.

<b>Counterweight</b>	Self-erecting counterweight system with configuration sensing and remote control. Integrated access steps and mounting for handrails. Load charts available for various counterweight configurations. Three upper counterweight configurations: 31.797 kg, 18.280 kg, 0 kg.
<b>Operators cab</b>	Fully-enclosed, all-steel modular cab with lockable sliding door, acoustical lining, anti-slip floor, and tinted safety glass. Grab bars and steps are provided for easy access to the cab. 20° tilt. Air conditioned with defroster, heater, and circulating fan. Six-way adjustable seat with headrest and seat belt. Electronic foot pedals control travel. A hydraulic foot pedal controls the swing service brake. Four-way adjustable armrest-mounted electronic joysticks control swing, main winch, auxiliary winch, boom hoist, and boom telescope. Selectable modes for fine control and travel. Seat termination switch immediately disables all joysticks and control pedals as the operator rises from the seat. Can also be disabled by switch on console. Camera views: Four cameras for view of winches, and rear, right and left sides of upper. Remote control work lights mounted at front left side, front right side, and rear right side. Two-speed windshield wipers for front and top glass. Dome light. Dry-chemical fire extinguisher.
<b>Engine</b>	Cummins B6.7 – 6 cylinder, 4 cycle, turbocharged and after cooled · Max. power: 326 HP (243 kW)@2,200 rpm · Max. torque: 770 lb-ft (1,044 Nm)@1,500 rpm · Alternator: 70 amp. Emission certifications: U.S. EPA Tier 4f, Euromot Stage V.
<b>Electrical system</b>	24 VDC.
<b>Fuel system</b>	321 liter capacity diesel tank, with engine mounted filter and inline fuel/water separator. 37.9 liter capacity DEF/AdBlue tank.
<b>Hydraulic system</b>	Hydraulic pumps: Two high pressure, variable piston pumps with positive displacement and power limiting controls for crane functions. Three gear pumps for swing, pilot/auxiliary, and cooling. Total pump output: 946 l/min@1900 rpm engine speed. 325 bar maximum pressure. Directional valves: Multiple pressure and flow compensated valves with electrically controlled integrated relief valves. Reservoir: 746 liter capacity with filler/breather, sight gauge, cleanout, low level switch, and sump drain. Filtration: Three 5-micron, full flow return filters with electrical clogging indicator. 3-micron inline pilot oil pressure filter. Two 10-micron case flow filters.
<b>Winches</b>	Planetary geared two-speed winch with grooved drum, hydraulic motor, multi-disc internal brake and counter-balance valve. Includes drum rotation and last layer indicators (complete winch performance specs on page 16). Main winch: Rope diameter and length: 19 mm x 320 m Auxiliary winch: Rope diameter and length: 19 mm x 225 m
<b>Swing</b>	An axial piston swing motor with planetary gear reducer drives the pinion and the internal gear shear-ball slew bearing allowing smooth rotation even at low speeds. Swing speed: 0-1.2 rpm. Modes: Free swing with counter swing, or controlled swing with hydraulic braking. Swing parking brake: Spring applied failsafe brake with hydraulic release that is controlled from the operators cab. Swing service brake: Hydraulically applied, controlled through foot actuated pedal. House lock systems: 360° house lock actuated from the operator's cab.



# Technical Description

## Crawler carrier

Carrier comprising a center carbody, 4 extension beams, 2 crawlers, and integrated assembly jacks. Tool-free connection between crawlers and extension beams.

<b>Carbody</b>	Torsion resistant welded structure constructed of high strength steel. Hydraulic lines with quick connection panels to crawler drives.
<b>Track extension</b>	Powerful hydraulic track extend system quickly adjusts operating width while stationary or travelling. Track position sensing allows automatic selection of operating configuration in AML.
<b>Crawlers</b>	Two crawler frames are paired with a track group. Self-assembly with 4 track frame lifting points. Track rollers: Fifteen bottom rollers and replaceable top wear pads on each track frame. Idler: Oil filled, self-lubricating with nitrogen type tensioner. Track shoes: 900 mm, 3-bar semi-grousers are standard equipment.
<b>Crawler drive</b>	The tracks are powered by a pilot controlled, two-speed drive with piston motor and parking brake. Each crawler speed is infinitely variable, both independently and in opposite direction. 1.0 km/hr / 2.5 km/hr · Gradeability (unladen): 52 %.
<b>Assembly jacks</b>	2-stage jacks mounted to carbody structure with radio remote control and self-leveling for easy assembly/disassembly for transport. Includes 4 octagonal outrigger pads.
<b>Carbody counterweights</b>	Two carbody counterweights with integrated lift points. Rear counterweight includes storage locations for track frame assembly bars and outrigger pads. Front counterweight includes toolbox and storage location for overhaul ball.

## Optional equipment

<b>Heavy lift jib</b>	Total length: 3.6 m    Offset angles: 0°-40°	Max. lifting height: 63.4 m
<b>Main jib</b>	Total length: 10.3 m    Offset angles: 0°-40° (hydraulic or mechanical offset)	Max. lifting height: 71.3 m
<b>Fly jib</b>	Total length: 18.0 m when mounted to main jib · Offset angles: 0°-40° (hydraulic or mechanical offset) · Max. lifting height: 78.9 m	
<b>Long jib</b>	Total length: 32.0 m; includes 2 x lattice inserts, main, and fly jibs · Offset angles: 0°-40° (hydraulic or mechanical offset) · Max. lifting height: 92.0 m	
<b>Hook blocks</b>	100 t ton hook block - seven steel sheaves with swivel hook and safety latch. 45 t ton hook block - three steel sheaves with swivel hook and safety latch. 10 t ton overhaul ball with swivel hook and safety latch.	
<b>Crawler shoes</b>	900 mm flat shoes 1000 mm flat shoes 1000 mm 3-bar semi-grouser	
<b>Cold weather packages</b>	Cold weather options are available for operation to -40°C (consult factory for application support).	
<b>Work platform</b>	Model WP750 – 0.9 m x 1.8 m, all steel, welded, two person platform with maximum capacity of 340 kg.	
<b>Automatic central lubrication system</b>		
<b>Anemometer</b>	Mounts to boom or jib head with cab display.	
<b>Aircraft warning beacon</b>		
<b>Cab mounted rotating beacon</b>		
<b>TRAM boom access system</b>		
<b>FOPS</b>	Operator cab falling object protection system; ISO 3449 Level II compliant.	
<b>Additional handrails</b>	For top of engine side covers.	
<b>Boom removal system</b>		
<b>Full function radio remote control package</b>		
<b>Load charts for barge operation</b>		





[tac.sales@tadano.com](mailto:tac.sales@tadano.com)  
[www.tadanoamericas.com](http://www.tadanoamericas.com)

**Tadano PanAmerican Operations**  
4242 W Greens Road, Houston, TX 77066  
Phone: +1 (281) 869-0030



Lifting your dreams

